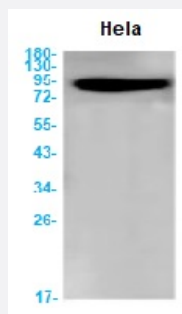


RecomAb™

DTL recombinant monoclonal antibody, clone R03-2G4

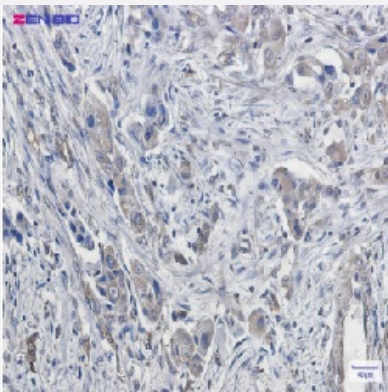
Catalog # RAB01507 Size 100 uL

Applications



Western Blot

Western blot analysis of CDT2 in HeLa lysates using human CDT2 recombinant monoclonal antibody, clone R03-2G4 (Cat # RAB01507).



Immunohistochemistry (Formalin/PFA-fixed paraffin-embedded sections)

Immunohistochemistry (Formalin-fixed paraffin-embedded sections) of Human lung cancer with CDT2 recombinant monoclonal antibody, clone R03-2G4 (Cat # RAB01507).

Specification

Product Description	Rabbit recombinant monoclonal antibody raised against human CDT2.
Antibody Species	Rabbit
Immunogen	Original antibody is raised against recombinant protein corresponding to human CDT2
Theoretical MW (kDa)	Calculated MW: 79 kD
Reactivity	Human

Form	Liquid
Purification	Affinity purification
Isotype	IgG
Recommend Usage	Immunohistochemistry (1:50-1/100) Western Blot (1:500-1:1000) The optimal working dilution should be determined by the end user.
Storage Buffer	In 50 mM Tris-Glycine, pH 7.4 (0.15 M NaCl, 40% Glycerol, 0.01% Sodium azide and 0.05% BSA)
Storage Instruction	Store at 4°C for short term. For long term storage store at -20°C. Aliquot to avoid repeated freezing and thawing.
Note	This product contains sodium azide: a POISONOUS AND HAZARDOUS SUBSTANCE which should be handled by trained staff only.

Applications

- Western Blot

Western blot analysis of CDT2 in Hela lysates using human CDT2 recombinant monoclonal antibody, clone R03-2G4 (Cat # RAB01507).

- Immunohistochemistry (Formalin/PFA-fixed paraffin-embedded sections)

Immunohistochemistry (Formalin-fixed paraffin-embedded sections) of Human lung cancer with CDT2 recombinant monoclonal antibody, clone R03-2G4 (Cat # RAB01507).

Gene Info — DTL

Entrez GeneID	51514
Protein Accession#	Q9NZJ0
Gene Name	DTL
Gene Alias	CDT2, DCAF2, L2DTL, RAMP
Gene Description	denticleless homolog (Drosophila)
Omim ID	610617
Gene Ontology	Hyperlink
Other Designations	OTTHUMP00000035221 RA regulated nuclear matrix associated protein RA-regulated nuclear matrix-associated protein denticleless homolog

Disease

- [Carcinoma](#)
- [Esophageal Neoplasms](#)