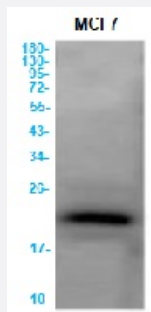


RecomAb™

CLDN3 recombinant monoclonal antibody, clone R08-4F8

Catalog # RAB01500 Size 100 uL

Applications



Western Blot

Western blot analysis of Claudin 3 in MCF-7 lysates using human Claudin 3 recombinant monoclonal antibody, clone R08-4F8 (Cat # RAB01500).

Specification

Product Description	Rabbit recombinant monoclonal antibody raised against synthetic peptide of human Claudin 3.
Antibody Species	Rabbit
Immunogen	Original antibody is raised against a synthetic peptide corresponding to human Claudin 3
Theoretical MW (kDa)	Calculated MW: 23 kD
Reactivity	Human
Form	Liquid
Purification	Affinity purification
Isotype	IgG
Recommend Usage	Immunofluorescence (1:50-1:200) Immunoprecipitation (1:20) Western Blot (1:500-1:1000) The optimal working dilution should be determined by the end user.
Storage Buffer	In 50 mM Tris-Glycine, pH 7.4 (0.15 M NaCl, 40% Glycerol, 0.01% Sodium azide and 0.05% BSA)

Storage Instruction

Store at 4°C for short term. For long term storage store at -20°C.
Aliquot to avoid repeated freezing and thawing.

Note

This product contains sodium azide: a POISONOUS AND HAZARDOUS SUBSTANCE which should be handled by trained staff only.

Applications

- Western Blot

Western blot analysis of Claudin 3 in MCF-7 lysates using human Claudin 3 recombinant monoclonal antibody, clone R08-4F8 (Cat # RAB01500).

- Immunocytochemistry

- Immunoprecipitation

Gene Info — CLDN3

Entrez GeneID [1365](#)

Protein Accession# [O15551](#)

Gene Name CLDN3

Gene Alias C7orf1, CPE-R2, CPETR2, HRVP1, RVP1

Gene Description claudin 3

Omim ID [602910](#)

Gene Ontology [Hyperlink](#)

Gene Summary

Tight junctions represent one mode of cell-to-cell adhesion in epithelial or endothelial cell sheets, forming continuous seals around cells and serving as a physical barrier to prevent solutes and water from passing freely through the paracellular space. These junctions are comprised of sets of continuous networking strands in the outwardly facing cytoplasmic leaflet, with complementary grooves in the inwardly facing extracytoplasmic leaflet. The protein encoded by this intronless gene, a member of the claudin family, is an integral membrane protein and a component of tight junction strands. It is also a low-affinity receptor for Clostridium perfringens enterotoxin, and shares aa sequence similarity with a putative apoptosis-related protein found in rat. [provided by RefSeq]

Other Designations

CPE-receptor 2|Clostridium perfringens enterotoxin receptor 2|OTTHUMP00000025042|OTTHUMP00000160506|claudin-3|ventral prostate.1-like protein

Pathway

- [Cell adhesion molecules \(CAMs\)](#)
- [Leukocyte transendothelial migration](#)
- [Tight junction](#)