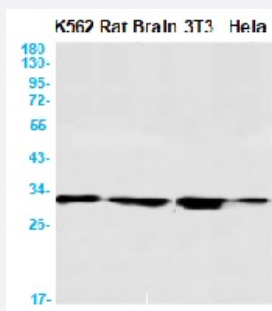


RecomAb™

CLPP recombinant monoclonal antibody, clone R02-1E5

Catalog # RAB01498 Size 100 uL

Applications



Western Blot

Western blot analysis of CLPP in K562, rat Brain, 3T3, HeLa lysates using human CLPP recombinant monoclonal antibody, clone R02-1E5 (Cat # RAB01498).

Specification

Product Description	Rabbit recombinant monoclonal antibody raised against synthetic peptide of human CLPP.
Antibody Species	Rabbit
Immunogen	Original antibody is raised against a synthetic peptide corresponding to human CLPP
Theoretical MW (kDa)	Calculated MW: 30 kD
Reactivity	Human
Form	Liquid
Purification	Affinity purification
Isotype	IgG
Recommend Usage	Immunoprecipitation (1:20) Western Blot (1:500-1:1000) The optimal working dilution should be determined by the end user.
Storage Buffer	In 50 mM Tris-Glycine, pH 7.4 (0.15 M NaCl, 40% Glycerol, 0.01% Sodium azide and 0.05% BSA)

Storage Instruction

Store at 4°C for short term. For long term storage store at -20°C.
Aliquot to avoid repeated freezing and thawing.

Note

This product contains sodium azide: a POISONOUS AND HAZARDOUS SUBSTANCE which should be handled by trained staff only.

Applications

- Western Blot

Western blot analysis of CLPP in K562, rat Brain, 3T3, Hela lysates using human CLPP recombinant monoclonal antibody, clone R02-1E5 (Cat # RAB01498).

- Immunoprecipitation

Gene Info — CLPP

Entrez GeneID[8192](#)**Protein Accession#**[Q16740](#)**Gene Name**

CLPP

Gene Alias

-

Gene Description

ClpP caseinolytic peptidase, ATP-dependent, proteolytic subunit homolog (E. coli)

Omim ID[601119](#)**Gene Ontology**[Hyperlink](#)**Gene Summary**

The protein encoded by this gene belongs to the peptidase family S14 and hydrolyzes proteins into small peptides in the presence of ATP and magnesium. The protein is transported into mitochondrial matrix and is associated with the inner mitochondrial membrane. [provided by RefSeq]

Other Designations

ATP-dependent protease ClpAP, proteolytic subunit, human|ClpP caseinolytic protease, ATP-dependent, proteolytic subunit homolog|endopeptidase Clp