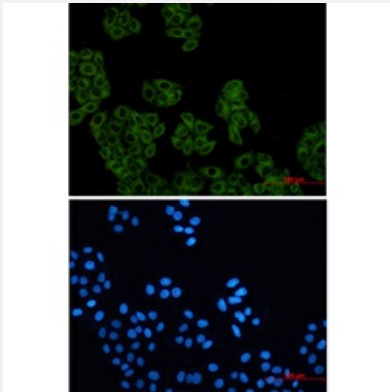


RecomAb™

ACTR2 recombinant monoclonal antibody, clone R04-3H3

Catalog # RAB01490 Size 100 uL

Applications



Immunocytochemistry

Immunocytochemistry analysis of Actin Related Protein 2 (green) in HeLa using Actin Related Protein 2 antibody, and DAPI (blue).

Specification

Product Description	Rabbit recombinant monoclonal antibody raised against human ACTR2.
Antibody Species	Rabbit
Immunogen	Original antibody is raised against recombinant protein corresponding to human ACTR2.
Theoretical MW (kDa)	Calculated MW: 45 kD
Reactivity	Human
Form	Liquid
Purification	Affinity purification
Isotype	IgG
Recommend Usage	Immunocytochemistry Immunofluorescence Western Blot The optimal working dilution should be determined by the end user.

Storage Buffer	In 50mM Tris-Glycine, pH 7.4, (0.15M NaCl, 40% Glycerol, 0.01% Sodium azide and 0.05% BSA)
Storage Instruction	Store at 4°C. For longer storage, aliquot and store at -20°C. Aliquot to avoid repeated freezing and thawing.
Note	This product contains sodium azide: a POISONOUS AND HAZARDOUS SUBSTANCE which should be handled by trained staff only.

Applications

- Western Blot
- Immunocytochemistry
Immunocytochemistry analysis of Actin Related Protein 2 (green) in Hela using Actin Related Protein 2 antibody, and DAPI (blue).
- Immunofluorescence

Gene Info — ACTR2

Entrez GeneID	10097
Protein Accession#	P61160
Gene Name	ACTR2
Gene Alias	ARP2
Gene Description	ARP2 actin-related protein 2 homolog (yeast)
Omim ID	604221
Gene Ontology	Hyperlink
Gene Summary	The specific function of this gene has not yet been determined; however, the protein it encodes is known to be a major constituent of the ARP2/3 complex. This complex is located at the cell surface and is essential to cell shape and motility through lamellipodial actin assembly and protrusion. Two transcript variants encoding different isoforms have been found for this gene. [provided by RefSeq]
Other Designations	actin-related protein 2