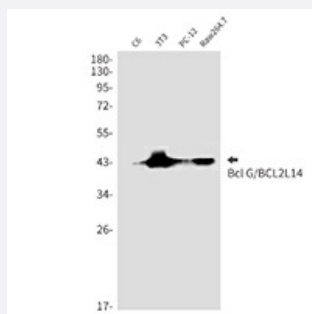


RecomAb™

BCL2L14 recombinant monoclonal antibody, clone R06-3D8

Catalog # RAB01484 Size 100 uL

Applications



Western Blot

Western blot analysis of Bcl G/BCL2L14 in C6, 3T3, PC-12, Raw264.7 lysates using Bcl2 L14 antibody.

Specification

Product Description	Rabbit recombinant monoclonal antibody raised against human BCL2L14.
Antibody Species	Rabbit
Immunogen	Original antibody is raised against recombinant protein corresponding to human BCL2L14.
Theoretical MW (kDa)	Calculated MW: 37 kD
Reactivity	Human
Form	Liquid
Purification	Affinity purification
Isotype	IgG
Recommend Usage	Immunocytochemistry Immunofluorescence Immunoprecipitation Western Blot The optimal working dilution should be determined by the end user.

Storage Buffer	In 50mM Tris-Glycine, pH 7.4, (0.15M NaCl, 40% Glycerol, 0.01% Sodium azide and 0.05% BSA)
Storage Instruction	Store at 4°C. For longer storage, aliquot and store at -20°C. Aliquot to avoid repeated freezing and thawing.
Note	This product contains sodium azide: a POISONOUS AND HAZARDOUS SUBSTANCE which should be handled by trained staff only.

Applications

- Western Blot

Western blot analysis of Bcl G/BCL2L14 in C6, 3T3, PC-12, Raw264.7 lysates using Bcl2 L14 antibody.

- Immunocytochemistry

- Immunofluorescence

- Immunoprecipitation

Gene Info — BCL2L14

Entrez GeneID	79370
Protein Accession#	Q9BZR8
Gene Name	BCL2L14
Gene Alias	BCLG
Gene Description	BCL2-like 14 (apoptosis facilitator)
Omim ID	606126
Gene Ontology	Hyperlink
Gene Summary	The protein encoded by this gene belongs to the BCL2 protein family. BCL2 family members form hetero- or homodimers and act as anti- or pro-apoptotic regulators that are involved in a wide variety of cellular activities. Overexpression of this gene has been shown to induce apoptosis in cells. Three alternatively spliced transcript variants encoding two distinct isoforms have been reported for this gene. [provided by RefSeq]
Other Designations	BCL2-like 14 apoptosis regulator BCL-G

Disease

- [Cardiovascular Diseases](#)
- [Diabetes Mellitus](#)
- [Edema](#)
- [Genetic Predisposition to Disease](#)
- [Narcolepsy](#)
- [Tobacco Use Disorder](#)