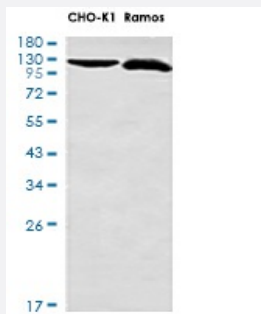


RecomAb™

# BUB1B recombinant monoclonal antibody, clone R05-3G7

Catalog # RAB01481      Size 100 uL

## Applications



### Western Blot

Western blot analysis of BubR1 in CHO-K1, Ramos lysates using BUBR1 antibody.

## Specification

<b>Product Description</b>	Rabbit recombinant monoclonal antibody raised against human BUB1B.
<b>Antibody Species</b>	Rabbit
<b>Immunogen</b>	Original antibody is raised against recombinant protein corresponding to human BUB1B.
<b>Theoretical MW (kDa)</b>	Calculated MW: 120 k
<b>Reactivity</b>	Human
<b>Form</b>	Liquid
<b>Purification</b>	Affinity purification
<b>Isotype</b>	IgG
<b>Recommend Usage</b>	Immunohistochemistry (Formalin/PFA-fixed paraffin-embedded sections) Immunoprecipitation Western Blot The optimal working dilution should be determined by the end user.
<b>Storage Buffer</b>	In 50mM Tris-Glycine, pH 7.4, (0.15M NaCl, 40% Glycerol, 0.01% Sodium azide and 0.05% BSA)

**Storage Instruction**

Store at 4°C. For longer storage, aliquot and store at -20°C.  
Aliquot to avoid repeated freezing and thawing.

**Note**

This product contains sodium azide: a POISONOUS AND HAZARDOUS SUBSTANCE which should be handled by trained staff only.

## Applications

- Western Blot

Western blot analysis of BubR1 in CHO-K1, Ramos lysates using BUBR1 antibody.

- Immunohistochemistry (Formalin/PFA-fixed paraffin-embedded sections)

- Immunoprecipitation

## Gene Info — BUB1B

**Entrez GeneID**[701](#)**Protein Accession#**[O60566](#)**Gene Name**

BUB1B

**Gene Alias**

BUB1beta, BUBR1, Bub1A, MAD3L, SSK1, hBUBR1

**Gene Description**

budding uninhibited by benzimidazoles 1 homolog beta (yeast)

**Omim ID**[114500 602860](#)**Gene Ontology**[Hyperlink](#)**Gene Summary**

This gene encodes a kinase involved in spindle checkpoint function. The protein has been localized to the kinetochore and plays a role in the inhibition of the anaphase-promoting complex/cyclosome (APC/C), delaying the onset of anaphase and ensuring proper chromosome segregation. Impaired spindle checkpoint function has been found in many forms of cancer. [provided by RefSeq]

**Other Designations**

BUB1 budding uninhibited by benzimidazoles 1 homolog beta|MAD3/BUB1-related protein kinase|budding uninhibited by benzimidazoles 1, beta

## Pathway

- [Cell cycle](#)

## Disease

- [Adenocarcinoma](#)
- [Breast cancer](#)
- [Breast Neoplasms](#)
- [Carcinoma](#)
- [Esophageal Neoplasms](#)
- [Genetic Predisposition to Disease](#)
- [Kidney Failure](#)
- [Lung Neoplasms](#)
- [Pulmonary Disease](#)