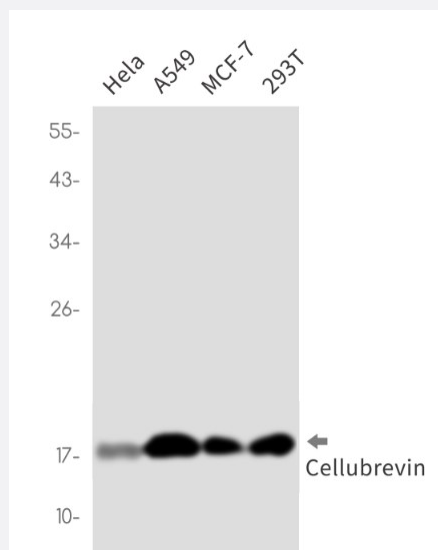


RecomAb™

# VAMP3 recombinant monoclonal antibody, clone R01-8D3

Catalog # RAB01472      Size 100 uL

## Applications

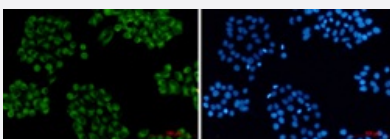


### Western Blot

Western Blot analysis of Hela, A549, MCF-7, 293T lysates with VAMP3 recombinant monoclonal antibody, clone R01-8D3 (Cat # RAB01472).

### Immunocytochemistry

Immunocytochemistry analysis of Cellubrevin (green) in hela using Cellubrevin antibody, and DAPI (blue)



## Specification

Product Description	Rabbit recombinant monoclonal antibody raised against human VAMP3.
Antibody Species	Rabbit
Immunogen	Original antibody is raised against recombinant protein corresponding to human VAMP3.

Theoretical MW (kDa)	Calculated MW: 11 kD
Reactivity	Human
Form	Liquid
Purification	Affinity purification
Isotype	IgG
Recommend Usage	Immunocytochemistry Immunofluorescence Immunoprecipitation Western Blot The optimal working dilution should be determined by the end user.
Storage Buffer	In 50mM Tris-Glycine, pH 7.4, (0.15M NaCl, 40% Glycerol, 0.01% Sodium azide and 0.05% BSA)
Storage Instruction	Store at 4°C. For longer storage, aliquot and store at -20°C. Aliquot to avoid repeated freezing and thawing.
Note	This product contains sodium azide: a POISONOUS AND HAZARDOUS SUBSTANCE which should be handled by trained staff only.

## Applications

- Western Blot

Western Blot analysis of Hela, A549, MCF-7, 293T lysates with VAMP3 recombinant monoclonal antibody, clone R01-8D3 (Cat # RAB01472).

- Immunocytochemistry

Immunocytochemistry analysis of Cellubrevin (green) in hela using Cellubrevin antibody, and DAPI (blue)

- Immunofluorescence

- Immunoprecipitation

## Gene Info — VAMP3

Entrez GeneID	<a href="#">9341</a>
Protein Accession#	<a href="#">Q15836</a>
Gene Name	VAMP3

Gene Alias	CEB
Gene Description	vesicle-associated membrane protein 3 (cellubrevin)
Omim ID	<a href="#">603657</a>
Gene Ontology	<a href="#">Hyperlink</a>
Gene Summary	Synaptobrevins/VAMPs, syntaxins, and the 25-kD synaptosomal-associated protein are the main components of a protein complex involved in the docking and/or fusion of synaptic vesicles with the presynaptic membrane. This gene is a member of the vesicle-associated membrane protein (VAMP)/synaptobrevin family. Because of its high homology to other known VAMPs, its broad tissue distribution, and its subcellular localization, the protein encoded by this gene was shown to be the human equivalent of the rodent cellubrevin. In platelets the protein resides on a compartment that is not mobilized to the plasma membrane on calcium or thrombin stimulation. [provided by RefSeq]
Other Designations	OTTHUMP00000001361 cellubrevin synaptobrevin-3 vesicle-associated membrane protein 3

## Pathway

- [SNARE interactions in vesicular transport](#)

## Disease

- [Bipolar Disorder](#)
- [Diabetes Mellitus](#)
- [Genetic Predisposition to Disease](#)