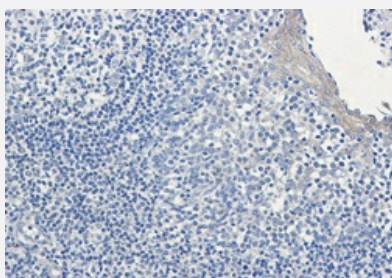


RecomAb™

CLIP1 recombinant monoclonal antibody, clone R07-1F3

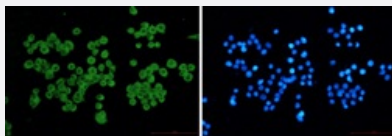
Catalog # RAB01470 Size 100 uL

Applications



Immunohistochemistry (Formalin/PFA-fixed paraffin-embedded sections)

Immunohistochemistry analysis of paraffin-embedded Human tonsil using CLIP170 antibody. High-pressure and temperature Sodium Citrate pH 6.0 was used for antigen retrieval.



Immunocytochemistry

Immunocytochemistry analysis of CLIP17 (green) in HeLa using CLIP170 antibody, and DAPI (blue).

Specification

Product Description	Rabbit recombinant monoclonal antibody raised against human CLIP1.
Antibody Species	Rabbit
Immunogen	Original antibody is raised against recombinant protein corresponding to human CLIP1.
Theoretical MW (kDa)	Calculated MW: 162 k
Reactivity	Human
Form	Liquid

Purification	Affinity purification
Isotype	IgG
Recommend Usage	Immunocytochemistry Immunofluorescence Immunohistochemistry (Frozen sections) Immunohistochemistry (Formalin/PFA-fixed paraffin-embedded sections) Immunoprecipitation Western Blot The optimal working dilution should be determined by the end user.
Storage Buffer	In 50mM Tris-Glycine, pH 7.4, (0.15M NaCl, 40% Glycerol, 0.01% Sodium azide and 0.05% BSA)
Storage Instruction	Store at 4°C. For longer storage, aliquot and store at -20°C. Aliquot to avoid repeated freezing and thawing.
Note	This product contains sodium azide: a POISONOUS AND HAZARDOUS SUBSTANCE which should be handled by trained staff only.

Applications

- Western Blot
- Immunohistochemistry (Formalin/PFA-fixed paraffin-embedded sections)
Immunohistochemistry analysis of paraffin-embedded Human tonsil using CLIP170 antibody. High-pressure and temperature Sodium Citrate pH 6.0 was used for antigen retrieval.
- Immunohistochemistry (Frozen sections)
- Immunocytochemistry
Immunocytochemistry analysis of CLIP17 (green) in hela using CLIP170 antibody, and DAPI (blue)
- Immunofluorescence
- Immunoprecipitation

Gene Info — CLIP1

Entrez GeneID	6249
Protein Accession#	P30622

Gene Name	CLIP1
Gene Alias	CLIP, CLIP-170, CLIP170, CYLN1, MGC131604, RSN
Gene Description	CAP-GLY domain containing linker protein 1
Omim ID	179838
Gene Ontology	Hyperlink
Other Designations	Reed-Steinberg cell-expressed intermediate filament-associated protein cytoplasmic linker 1 rest in restin (Reed-Steinberg cell-expressed intermediate filament-associated protein)