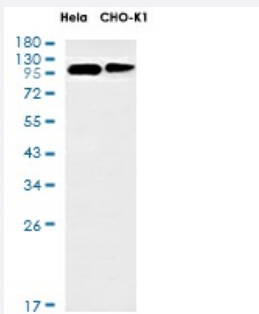


RecomAb™

CLSTN1 recombinant monoclonal antibody, clone R07-8H2

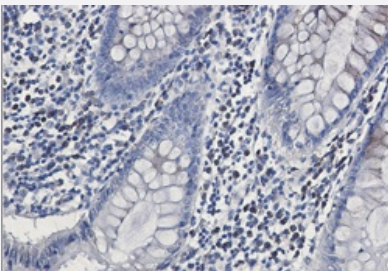
Catalog # RAB01468 Size 100 uL

Applications



Western Blot

Western blot analysis of CLSTN1 in HeLa, CHO-K1 lysates using CLSTN1 antibody



Immunohistochemistry (Formalin/PFA-fixed paraffin-embedded sections)

Immunohistochemistry analysis of paraffin-embedded Human colon cancer using CLSTN1 antibody. High-pressure and temperature Sodium Citrate pH 6.0 was used for antigen retrieval

Specification

Product Description	Rabbit recombinant monoclonal antibody raised against human CLSTN1.
Antibody Species	Rabbit
Immunogen	Original antibody is raised against recombinant protein corresponding to human CLSTN1.
Theoretical MW (kDa)	Calculated MW: 110 k
Reactivity	Human
Form	Liquid

Purification	Affinity purification
Isotype	IgG
Recommend Usage	Immunocytochemistry Immunofluorescence Immunohistochemistry (Frozen sections) Immunohistochemistry (Formalin/PFA-fixed paraffin-embedded sections) Western Blot The optimal working dilution should be determined by the end user.
Storage Buffer	In 50mM Tris-Glycine, pH 7.4, (0.15M NaCl, 40% Glycerol, 0.01% Sodium azide and 0.05% BSA)
Storage Instruction	Store at 4°C. For longer storage, aliquot and store at -20°C. Aliquot to avoid repeated freezing and thawing.
Note	This product contains sodium azide: a POISONOUS AND HAZARDOUS SUBSTANCE which should be handled by trained staff only.

Applications

- Western Blot

Western blot analysis of CLSTN1 in Hela, CHO-K1 lysates using CLSTN1 antibody

- Immunohistochemistry (Formalin/PFA-fixed paraffin-embedded sections)

Immunohistochemistry analysis of paraffin-embedded Human colon cancer using CLSTN1 antibody. High-pressure and temperature Sodium Citrate pH 6.0 was used for antigen retrieval

- Immunohistochemistry (Frozen sections)

- Immunocytochemistry

- Immunofluorescence

Gene Info — CLSTN1

Entrez GeneID	22883
Protein Accession#	O94985
Gene Name	CLSTN1
Gene Alias	ALC-ALPHA, CSTN1, FLJ32258, KIAA0911, PIK3CD, XB31alpha, alcalpha1, alcalpha2

Gene Description	calsyntenin 1
Omim ID	611321
Gene Ontology	Hyperlink
Other Designations	OTTHUMP00000001597 OTTHUMP00000001598 alcadein alpha 1 non-classical cadherin XB3 1alpha1