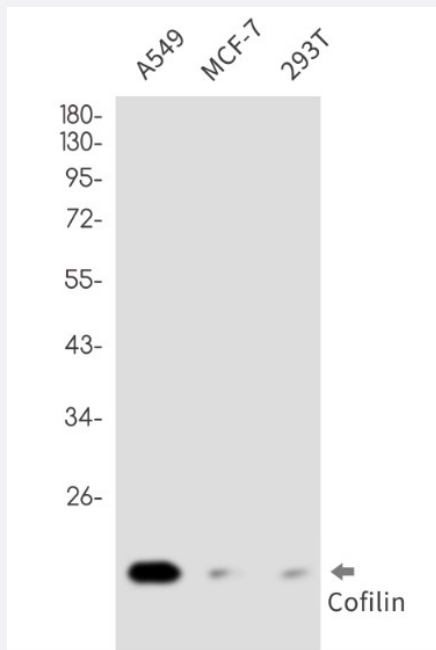


RecomAb™

CFL1 recombinant monoclonal antibody, clone R06-2C0

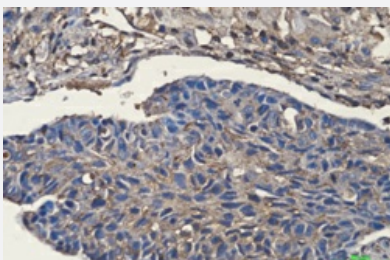
Catalog # RAB01467 Size 100 uL

Applications



Western Blot

Western Blot analysis of A549, MCF-7, 293T lysates with CFL1 recombinant monoclonal antibody, clone R06-2C0 (Cat # RAB01467).



Immunohistochemistry (Formalin/PFA-fixed paraffin-embedded sections)

Immunohistochemistry analysis of paraffin-embedded Human lung cancer using Cofilin antibody. High-pressure and temperature Sodium Citrate pH 6.0 was used for antigen retrieval.

Specification

Product Description	Rabbit recombinant monoclonal antibody raised against human CFL1.
Antibody Species	Rabbit

Immunogen	Original antibody is raised against recombinant protein corresponding to human CFL1.
Theoretical MW (kDa)	Calculated MW: 19 kD
Reactivity	Human
Form	Liquid
Purification	Affinity purification
Isotype	IgG
Recommend Usage	Immunocytochemistry Immunofluorescence Immunohistochemistry (Frozen sections) Immunohistochemistry (Formalin/PFA-fixed paraffin-embedded sections) Western Blot The optimal working dilution should be determined by the end user.
Storage Buffer	In 50mM Tris-Glycine, pH 7.4, (0.15M NaCl, 40% Glycerol, 0.01% Sodium azide and 0.05% BSA)
Storage Instruction	Store at 4°C. For longer storage, aliquot and store at -20°C. Aliquot to avoid repeated freezing and thawing.
Note	This product contains sodium azide: a POISONOUS AND HAZARDOUS SUBSTANCE which should be handled by trained staff only.

Applications

- Western Blot

Western Blot analysis of A549, MCF-7, 293T lysates with CFL1 recombinant monoclonal antibody, clone R06-2C0 (Cat # RAB01467).

- Immunohistochemistry (Formalin/PFA-fixed paraffin-embedded sections)

Immunohistochemistry analysis of paraffin-embedded Human lung cancer using Cofilin antibody. High-pressure and temperature Sodium Citrate pH 6.0 was used for antigen retrieval.

- Immunohistochemistry (Frozen sections)

- Immunocytochemistry

- Immunofluorescence

Gene Info — CFL1

Entrez GeneID	1072
Protein Accession#	P23528
Gene Name	CFL1
Gene Alias	CFL
Gene Description	cofilin 1 (non-muscle)
Omim ID	601442
Gene Ontology	Hyperlink
Gene Summary	Cofilin is a widely distributed intracellular actin-modulating protein that binds and depolymerizes filamentous F-actin and inhibits the polymerization of monomeric G-actin in a pH-dependent manner. It is involved in the translocation of actin-cofilin complex from cytoplasm to nucleus.[supplied by OMIM]
Other Designations	-

Pathway

- [Axon guidance](#)
- [Fc gamma R-mediated phagocytosis](#)
- [Regulation of actin cytoskeleton](#)

Disease

- [Spinal Dysraphism](#)