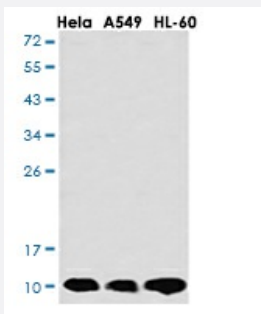


RecomAb™

CSTB recombinant monoclonal antibody, clone R02-7D7

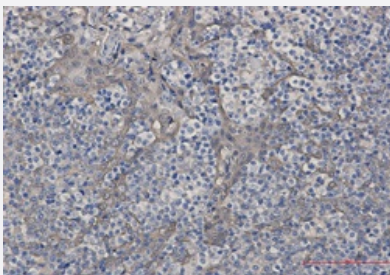
Catalog # RAB01464 Size 100 uL

Applications



Western Blot

Western blot analysis of CystatinB in HeLa, A549, HL-60 lysates using CystatinB antibody.



Immunohistochemistry (Formalin/PFA-fixed paraffin-embedded sections)

Immunohistochemistry analysis of paraffin-embedded Human tonsil using CystatinB antibody. High-pressure and temperature Sodium Citrate pH 6.0 was used for antigen retrieval.

Specification

Product Description	Rabbit recombinant monoclonal antibody raised against human CSTB.
Antibody Species	Rabbit
Immunogen	Original antibody is raised against recombinant protein corresponding to human CSTB.
Theoretical MW (kDa)	Calculated MW: 11 kD
Reactivity	Human
Form	Liquid

Purification	Affinity purification
Isotype	IgG
Recommend Usage	Immunohistochemistry (Formalin/PFA-fixed paraffin-embedded sections) Western Blot The optimal working dilution should be determined by the end user.
Storage Buffer	In 50mM Tris-Glycine, pH 7.4, (0.15M NaCl, 40% Glycerol, 0.01% Sodium azide and 0.05% BSA)
Storage Instruction	Store at 4°C. For longer storage, aliquot and store at -20°C. Aliquot to avoid repeated freezing and thawing.
Note	This product contains sodium azide: a POISONOUS AND HAZARDOUS SUBSTANCE which should be handled by trained staff only.

Applications

- Western Blot

Western blot analysis of CystatinB in Hela, A549, HL-60 lysates using CystatinB antibody.

- Immunohistochemistry (Formalin/PFA-fixed paraffin-embedded sections)

Immunohistochemistry analysis of paraffin-embedded Human tonsil using CystatinB antibody. High-pressure and temperature Sodium Citrate pH 6.0 was used for antigen retrieval.

Gene Info — CSTB

Entrez GeneID	1476
Protein Accession#	P04080
Gene Name	CSTB
Gene Alias	CST6, EPM1, PME, STFB
Gene Description	cystatin B (stefin B)
Omim ID	254800 601145
Gene Ontology	Hyperlink

Gene Summary

The cystatin superfamily encompasses proteins that contain multiple cystatin-like sequences. Some of the members are active cysteine protease inhibitors, while others have lost or perhaps never acquired this inhibitory activity. There are three inhibitory families in the superfamily, including the type 1 cystatins (stefins), type 2 cystatins and kininogens. This gene encodes a stefin that functions as an intracellular thiol protease inhibitor. The protein is able to form a dimer stabilized by noncovalent forces, inhibiting papain and cathepsins L, H and B. The protein is thought to play a role in protecting against the proteases leaking from lysosomes. Evidence indicates that mutations in this gene are responsible for the primary defects in patients with progressive myoclonic epilepsy (EPM1). [provided by RefSeq]

Other Designations

CPI-B|cystatin B|liver thiol proteinase inhibitor|stefin B

Disease

- [Cardiovascular Diseases](#)
- [Diabetes Mellitus](#)
- [Edema](#)
- [Epilepsy](#)