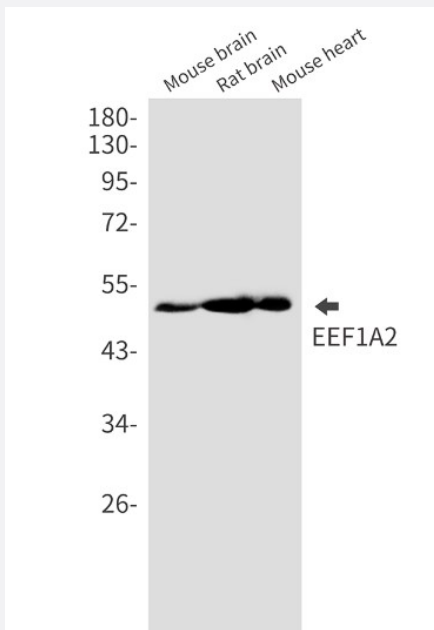


RecomAb™

EEF1A2 recombinant monoclonal antibody, clone R06-6I5

Catalog # RAB01460 Size 100 uL

Applications



Western Blot

Western Blot analysis of mouse brain, rat brain, mouse heart lysates with EEF1A2 recombinant monoclonal antibody, clone R06-6I5 (Cat # RAB01460).

Specification

Product Description	Rabbit recombinant monoclonal antibody raised against human EEF1A2.
Antibody Species	Rabbit
Immunogen	Original antibody is raised against recombinant protein corresponding to human EEF1A2.
Theoretical MW (kDa)	Calculated MW: 50 kD
Reactivity	Human
Form	Liquid
Purification	Affinity purification

Isotype	IgG
Recommend Usage	Immunoprecipitation Western Blot The optimal working dilution should be determined by the end user.
Storage Buffer	In 50mM Tris-Glycine, pH 7.4, (0.15M NaCl, 40% Glycerol, 0.01% Sodium azide and 0.05% BSA)
Storage Instruction	Store at 4°C. For longer storage, aliquot and store at -20°C. Aliquot to avoid repeated freezing and thawing.
Note	This product contains sodium azide: a POISONOUS AND HAZARDOUS SUBSTANCE which should be handled by trained staff only.

Applications

- Western Blot

Western Blot analysis of mouse brain, rat brain, mouse heart lysates with EEf1A2 recombinant monoclonal antibody, clone R06-6I5 (Cat # RAB01460).

- Immunoprecipitation

Gene Info — EEf1A2

Entrez GeneID	1917
Protein Accession#	Q05639
Gene Name	EEf1A2
Gene Alias	EEf1AL, EF-1-alpha-2, EF1A, FLJ41696, HS1, STN, STNL
Gene Description	eukaryotic translation elongation factor 1 alpha 2
Omim ID	602959
Gene Ontology	Hyperlink
Gene Summary	This gene encodes an isoform of the alpha subunit of the elongation factor-1 complex, which is responsible for the enzymatic delivery of aminoacyl tRNAs to the ribosome. This isoform (alpha 2) is expressed in brain, heart and skeletal muscle, and the other isoform (alpha 1) is expressed in brain, placenta, lung, liver, kidney, and pancreas. This gene may be critical in the development of ovarian cancer. Alternatively spliced transcript variants encoding different isoforms have been found for this gene. [provided by RefSeq]
Other Designations	OTTHUMP00000031776 elongation factor 1-alpha 2 elongation factor-1 alpha statin S1 statin-like