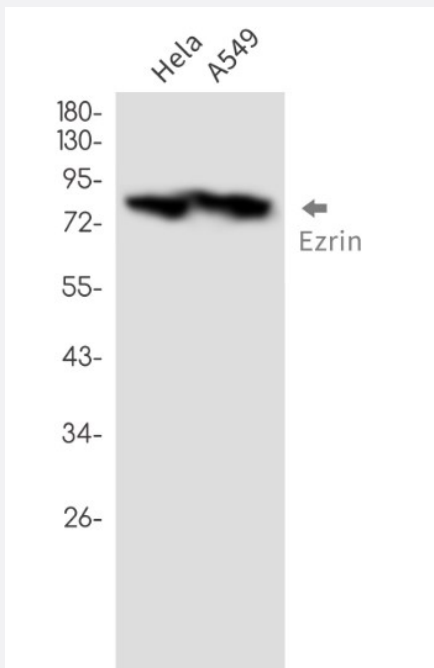


RecomAb™

EZR recombinant monoclonal antibody, clone R06-3A5

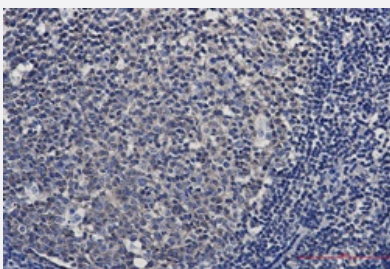
Catalog # RAB01454 Size 100 uL

Applications



Western Blot

Western Blot analysis of HeLa, A549 lysates with EZR recombinant monoclonal antibody, clone R06-3A5 (Cat # RAB01454).



Immunohistochemistry (Formalin/PFA-fixed paraffin-embedded sections)

Immunohistochemistry analysis of paraffin-embedded Human tonsil using Ezrin antibody. High-pressure and temperature Sodium Citrate pH 6.0 was used for antigen retrieval.

Specification

Product Description	Rabbit recombinant monoclonal antibody raised against human EZR.
Antibody Species	Rabbit

Immunogen	Original antibody is raised against recombinant protein corresponding to human EZR.
Theoretical MW (kDa)	Calculated MW: 69 kD
Reactivity	Human
Form	Liquid
Purification	Affinity purification
Isotype	IgG
Recommend Usage	Immunohistochemistry (Formalin/PFA-fixed paraffin-embedded sections) Western Blot The optimal working dilution should be determined by the end user.
Storage Buffer	In 50mM Tris-Glycine, pH 7.4, (0.15M NaCl, 40% Glycerol, 0.01% Sodium azide and 0.05% BSA)
Storage Instruction	Store at 4°C. For longer storage, aliquot and store at -20°C. Aliquot to avoid repeated freezing and thawing.
Note	This product contains sodium azide: a POISONOUS AND HAZARDOUS SUBSTANCE which should be handled by trained staff only.

Applications

- Western Blot

Western Blot analysis of Hela, A549 lysates with EZR recombinant monoclonal antibody, clone R06-3A5 (Cat # RAB01454).

- Immunohistochemistry (Formalin/PFA-fixed paraffin-embedded sections)

Immunohistochemistry analysis of paraffin-embedded Human tonsil using Ezrin antibody. High-pressure and temperature Sodium Citrate pH 6.0 was used for antigen retrieval.

Gene Info — EZR

Entrez GeneID	7430
Protein Accession#	P15311
Gene Name	EZR
Gene Alias	CVIL, CVL, DKFZp762H157, FLJ26216, MGC1584, VIL2
Gene Description	ezrin
Omim ID	123900

Gene Ontology

[Hyperlink](#)

Gene Summary

The cytoplasmic peripheral membrane protein encoded by this gene functions as a protein-tyrosine kinase substrate in microvilli. As a member of the ERM protein family, this protein serves as an intermediate between the plasma membrane and the actin cytoskeleton. This protein plays a key role in cell surface structure adhesion, migration and organization, and it has been implicated in various human cancers. A pseudogene located on chromosome 3 has been identified for this gene. Alternatively spliced variants have also been described for this gene. [provided by RefSeq]

Other Designations

OTTHUMP00000017506|OTTHUMP00000017507|cytovillin 2|villin 2 (ezrin)

Pathway

- [Leukocyte transendothelial migration](#)
- [Pathogenic Escherichia coli infection - EHEC](#)
- [Regulation of actin cytoskeleton](#)

Disease

- [Asthma](#)
- [Cardiovascular Diseases](#)
- [Diabetes Mellitus](#)
- [Edema](#)
- [Genetic Predisposition to Disease](#)
- [Hypersensitivity](#)
- [Lung Neoplasms](#)
- [Ovarian Neoplasms](#)
- [Pulmonary Disease](#)
- [Tobacco Use Disorder](#)
- [Urinary Bladder Neoplasms](#)
- [Werner syndrome](#)