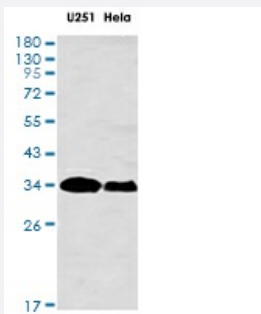


RecomAb™

# FHL1 recombinant monoclonal antibody, clone R03-2H8

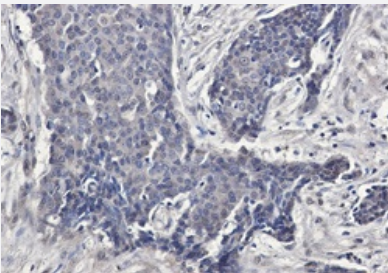
Catalog # RAB01451      Size 100 uL

## Applications



### Western Blot

Western blot analysis of FHL1 in HeLa, U251 lysates using FHL1 antibody.



### Immunohistochemistry (Formalin/PFA-fixed paraffin-embedded sections)

Immunohistochemistry analysis of paraffin-embedded Human breast cancer using FHL1 antibody. High-pressure and temperature Sodium Citrate pH 6.0 was used for antigen retrieval.

## Specification

Product Description	Rabbit recombinant monoclonal antibody raised against human FHL1.
Antibody Species	Rabbit
Immunogen	Original antibody is raised against recombinant protein corresponding to human FHL1.
Theoretical MW (kDa)	Calculated MW: 36 kD
Reactivity	Human
Form	Liquid

<b>Purification</b>	Affinity purification
<b>Isotype</b>	IgG
<b>Recommend Usage</b>	Immunohistochemistry (Formalin/PFA-fixed paraffin-embedded sections) Immunoprecipitation Western Blot The optimal working dilution should be determined by the end user.
<b>Storage Buffer</b>	In 50mM Tris-Glycine, pH 7.4, (0.15M NaCl, 40% Glycerol, 0.01% Sodium azide and 0.05% BSA)
<b>Storage Instruction</b>	Store at 4°C. For longer storage, aliquot and store at -20°C. Aliquot to avoid repeated freezing and thawing.
<b>Note</b>	This product contains sodium azide: a POISONOUS AND HAZARDOUS SUBSTANCE which should be handled by trained staff only.

## Applications

- Western Blot

Western blot analysis of FHL1 in HeLa, U251 lysates using FHL1 antibody.

- Immunohistochemistry (Formalin/PFA-fixed paraffin-embedded sections)

Immunohistochemistry analysis of paraffin-embedded Human breast cancer using FHL1 antibody. High-pressure and temperature Sodium Citrate pH 6.0 was used for antigen retrieval.

- Immunoprecipitation

## Gene Info — FHL1

<b>Entrez GeneID</b>	<a href="#">2273</a>
<b>Protein Accession#</b>	<a href="#">Q13642</a>
<b>Gene Name</b>	FHL1
<b>Gene Alias</b>	FHL1B, FLH1A, KYO-T, MGC111107, SLIM1, XMPMA, bA535K18.1
<b>Gene Description</b>	four and a half LIM domains 1
<b>Omim ID</b>	<a href="#">300163</a>
<b>Gene Ontology</b>	<a href="#">Hyperlink</a>

**Gene Summary**

LIM proteins, named for 'LIN11, ISL1, and MEC3,' are defined by the possession of a highly conserved double zinc finger motif called the LIM domain.[supplied by OMIM]

**Other Designations**

Four-and-a-half LIM domains 1|OTTHUMP00000024097|bA535K18.1 (LIM protein SLIMMER)