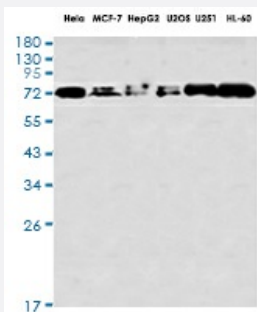


RecomAb™

FXR1 recombinant monoclonal antibody, clone R03-011

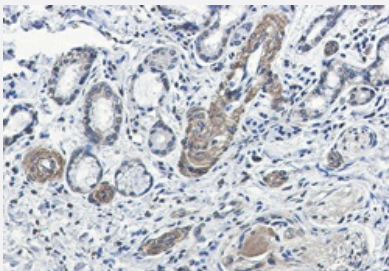
Catalog # RAB01449 Size 100 uL

Applications



Western Blot

Western blot analysis of FXR1 in Hela, MCF-7, HepG2, U2OS, U251, HL-60 lysates using FXR1 antibody.



Immunohistochemistry (Formalin/PFA-fixed paraffin-embedded sections)

Immunohistochemistry analysis of paraffin-embedded Human lung cancer using FXR1 antibody. High-pressure and temperature Sodium Citrate pH 6.0 was used for antigen retrieval.

Specification

Product Description	Rabbit recombinant monoclonal antibody raised against human FXR1.
Antibody Species	Rabbit
Immunogen	Original antibody is raised against recombinant protein corresponding to human FXR1.
Theoretical MW (kDa)	Calculated MW: 70 kD
Reactivity	Human
Form	Liquid

Purification	Affinity purification
Isotype	IgG
Recommend Usage	Immunocytochemistry Immunofluorescence Immunohistochemistry (Frozen sections) Immunohistochemistry (Formalin/PFA-fixed paraffin-embedded sections) Western Blot The optimal working dilution should be determined by the end user.
Storage Buffer	In 50mM Tris-Glycine, pH 7.4, (0.15M NaCl, 40% Glycerol, 0.01% Sodium azide and 0.05% BSA)
Storage Instruction	Store at 4°C. For longer storage, aliquot and store at -20°C. Aliquot to avoid repeated freezing and thawing.
Note	This product contains sodium azide: a POISONOUS AND HAZARDOUS SUBSTANCE which should be handled by trained staff only.

Applications

- Western Blot

Western blot analysis of FXR1 in Hela, MCF-7, HepG2, U2OS, U251, HL-60 lysates using FXR1 antibody.

- Immunohistochemistry (Formalin/PFA-fixed paraffin-embedded sections)

Immunohistochemistry analysis of paraffin-embedded Human lung cancer using FXR1 antibody. High-pressure and temperature Sodium Citrate pH 6.0 was used for antigen retrieval.

- Immunohistochemistry (Frozen sections)

- Immunocytochemistry

- Immunofluorescence

Gene Info — FXR1

Entrez GeneID	8087
Protein Accession#	P51114
Gene Name	FXR1
Gene Alias	-

Gene Description	fragile X mental retardation, autosomal homolog 1
Omim ID	600819
Gene Ontology	Hyperlink
Gene Summary	<p>The protein encoded by this gene is an RNA binding protein that interacts with the functionally-similar proteins FMR1 and FXR2. These proteins shuttle between the nucleus and cytoplasm and associate with polyribosomes, predominantly with the 60S ribosomal subunit. Three transcript variants encoding different isoforms have been found for this gene. [provided by RefSeq]</p>
Other Designations	fragile X mental retardation-related protein 1