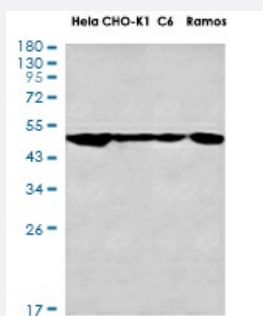


RecomAb™

TUBG1 recombinant monoclonal antibody, clone R06-6A6

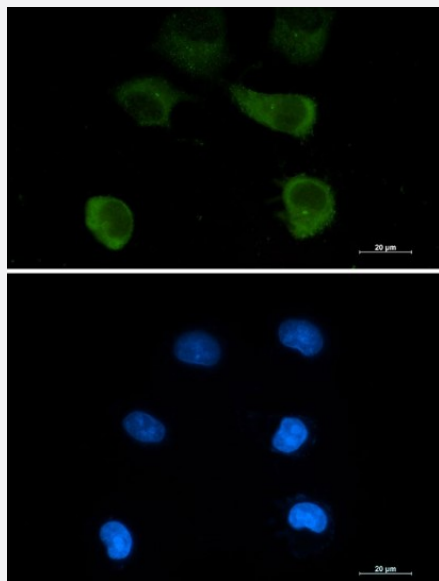
Catalog # RAB01446 Size 100 uL

Applications



Western Blot

Western blot analysis of gamma Tubulin in HeLa, CHO-K1, C6, Ramos lysates using gamma Tubulin antibody



Immunocytochemistry

Immunocytochemistry staining of HepG2 cells with TUBG1 recombinant monoclonal antibody, clone R06-6A6 (Cat # RAB01446).

Specification

Product Description	Rabbit recombinant monoclonal antibody raised against human TUBG1.
Antibody Species	Rabbit
Immunogen	Original antibody is raised against recombinant protein corresponding to human TUBG1.

Theoretical MW (kDa)	Calculated MW: 51 kD
Reactivity	Human
Form	Liquid
Purification	Affinity purification
Isotype	IgG
Recommend Usage	Immunocytochemistry Immunofluorescence Immunoprecipitation Western Blot The optimal working dilution should be determined by the end user.
Storage Buffer	In 50mM Tris-Glycine, pH 7.4, (0.15M NaCl, 40% Glycerol, 0.01% Sodium azide and 0.05% BSA)
Storage Instruction	Store at 4°C. For longer storage, aliquot and store at -20°C. Aliquot to avoid repeated freezing and thawing.
Note	This product contains sodium azide: a POISONOUS AND HAZARDOUS SUBSTANCE which should be handled by trained staff only.

Applications

- Western Blot

Western blot analysis of gamma Tubulin in Hela, CHO-K1, C6, Ramos lysates using gamma Tubulin antibody

- Immunocytochemistry

Immunocytochemistry staining of HepG2 cells with TUBG1 recombinant monoclonal antibody, clone R06-6A6 (Cat # RAB01446).

- Immunofluorescence

- Immunoprecipitation

Gene Info — TUBG1

Entrez GeneID	7283
Protein Accession#	P23258
Gene Name	TUBG1

Gene Alias	TUBG, TUBGCP1
Gene Description	tubulin, gamma 1
Omim ID	191135
Gene Ontology	Hyperlink
Gene Summary	<p>This gene encodes a member of the tubulin superfamily. The encoded protein localizes to the centrosome where it binds to microtubules as part of a complex referred to as the gamma-tubulin ring complex. The protein mediates microtubule nucleation and is required for microtubule formation and progression of the cell cycle. A pseudogene of this gene is found on chromosome 7. [provided by RefSeq]</p>
Other Designations	tubulin, gamma polypeptide

Disease

- [Adenocarcinoma](#)
- [Genetic Predisposition to Disease](#)
- [Pancreatic Neoplasms](#)