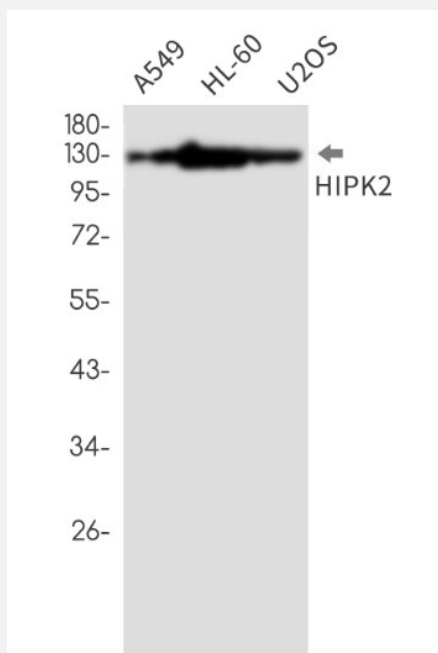


RecomAb™

# HIPK2 recombinant monoclonal antibody, clone R06-5G2

Catalog # RAB01434      Size 100 uL

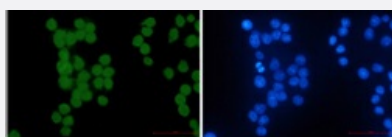
## Applications



### Western Blot

Western Blot analysis of A549, HL-60, U2OS lysates with HIPK2 recombinant monoclonal antibody, clone R06-5G2 (Cat # RAB01434).

### Immunocytochemistry



Immunocytochemistry analysis of HIPK2 (green) in hela using HIPK2 antibody, and DAPI (blue).

## Specification

<b>Product Description</b>	Rabbit recombinant monoclonal antibody raised against human HIPK2.
<b>Antibody Species</b>	Rabbit

Immunogen	Original antibody is raised against recombinant protein corresponding to human HIPK2.
Theoretical MW (kDa)	Calculated MW: 131 k
Reactivity	Human
Form	Liquid
Purification	Affinity purification
Isotype	IgG
Recommend Usage	Immunocytochemistry Immunofluorescence Immunoprecipitation Western Blot The optimal working dilution should be determined by the end user.
Storage Buffer	In 50mM Tris-Glycine, pH 7.4, (0.15M NaCl, 40% Glycerol, 0.01% Sodium azide and 0.05% BSA)
Storage Instruction	Store at 4°C. For longer storage, aliquot and store at -20°C. Aliquot to avoid repeated freezing and thawing.
Note	This product contains sodium azide: a POISONOUS AND HAZARDOUS SUBSTANCE which should be handled by trained staff only.

## Applications

- Western Blot

Western Blot analysis of A549, HL-60, U2OS lysates with HIPK2 recombinant monoclonal antibody, clone R06-5G2 (Cat # RAB01434).

- Immunocytochemistry

Immunocytochemistry analysis of HIPK2 (green) in hela using HIPK2 antibody, and DAPI(blue).

- Immunofluorescence

- Immunoprecipitation

## Gene Info — HIPK2

Entrez GeneID [28996](#)

Protein Accession# [Q9H2X6](#)

Gene Name	HIPK2
Gene Alias	DKFZp686K02111, FLJ23711, PRO0593
Gene Description	homeodomain interacting protein kinase 2
Omim ID	<a href="#">606868</a>
Gene Ontology	<a href="#">Hyperlink</a>
Gene Summary	HIPK2 is a conserved serine/threonine nuclear kinase that interacts with homeodomain transcription factors.[supplied by OMIM]
Other Designations	-

## Disease

- [Tobacco Use Disorder](#)