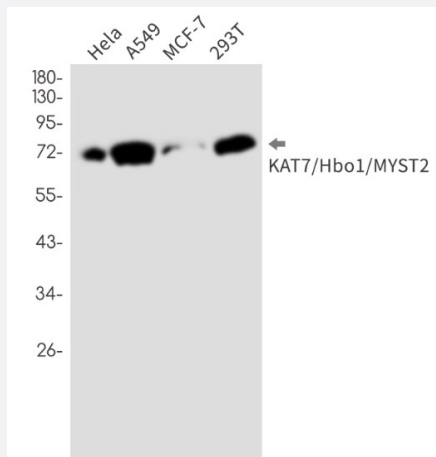


RecomAb™

# KAT7 recombinant monoclonal antibody, clone R01-2I6

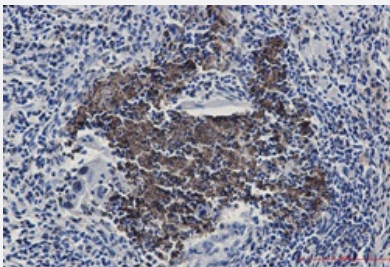
Catalog # RAB01423      Size 100 uL

## Applications



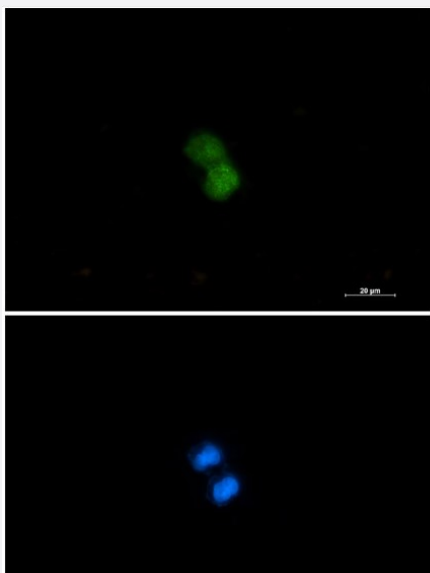
### Western Blot

Western Blot analysis of HeLa, A549, MCF-7, 293T lysates with KAT7 recombinant monoclonal antibody, clone R01-2I6 (Cat # RAB01423).



### Immunohistochemistry (Formalin/PFA-fixed paraffin-embedded sections)

Immunohistochemistry analysis of paraffin-embedded Human lung cancer tissue using KAT7/Hbo1/MYST2 antibody. High-pressure and temperature Sodium Citrate pH 6.0 was used for antigen retrieval.



## Immunocytochemistry

Immunocytochemistry staining of HCT-116 cells with KAT7 recombinant monoclonal antibody, clone R01-2I6 (Cat # RAB01423).

## Specification

<b>Product Description</b>	Rabbit recombinant monoclonal antibody raised against human KAT7.
<b>Antibody Species</b>	Rabbit
<b>Immunogen</b>	Original antibody is raised against recombinant protein corresponding to human KAT7.
<b>Theoretical MW (kDa)</b>	Calculated MW: 71 kD
<b>Reactivity</b>	Human
<b>Form</b>	Liquid
<b>Purification</b>	Affinity purification
<b>Isotype</b>	IgG
<b>Recommend Usage</b>	Immunocytochemistry Immunofluorescence Immunohistochemistry (Frozen sections) Immunohistochemistry (Formalin/PFA-fixed paraffin-embedded sections) Immunoprecipitation Western Blot The optimal working dilution should be determined by the end user.
<b>Storage Buffer</b>	In 50mM Tris-Glycine, pH 7.4, (0.15M NaCl, 40% Glycerol, 0.01% Sodium azide and 0.05% BSA)
<b>Storage Instruction</b>	Store at 4°C. For longer storage, aliquot and store at -20°C. Aliquot to avoid repeated freezing and thawing.

**Note**

This product contains sodium azide: a POISONOUS AND HAZARDOUS SUBSTANCE which should be handled by trained staff only.

## Applications

- Western Blot

Western Blot analysis of HeLa, A549, MCF-7, 293T lysates with KAT7 recombinant monoclonal antibody, clone R01-2I6 (Cat # RAB01423).

- Immunohistochemistry (Formalin/PFA-fixed paraffin-embedded sections)

Immunohistochemistry analysis of paraffin-embedded Human lung cancer tissue using KAT7/Hbo1/MYST2 antibody. High-pressure and temperature Sodium Citrate pH 6.0 was used for antigen retrieval.

- Immunohistochemistry (Frozen sections)

- Immunocytochemistry

Immunocytochemistry staining of HCT-116 cells with KAT7 recombinant monoclonal antibody, clone R01-2I6 (Cat # RAB01423).

- Immunofluorescence

- Immunoprecipitation

## Gene Info — MYST2

Entrez GeneID	<a href="#">11143</a>
---------------	-----------------------

Protein Accession#	<a href="#">O95251</a>
--------------------	------------------------

Gene Name	MYST2
-----------	-------

Gene Alias	HBO1, HBOA, KAT7
------------	------------------

Gene Description	MYST histone acetyltransferase 2
------------------	----------------------------------

Omim ID	<a href="#">609880</a>
---------	------------------------

Gene Ontology	<a href="#">Hyperlink</a>
---------------	---------------------------

Other Designations	histone acetyltransferase
--------------------	---------------------------

## Disease

- [Cardiovascular Diseases](#)
- [Diabetes Mellitus](#)
- [Edema](#)