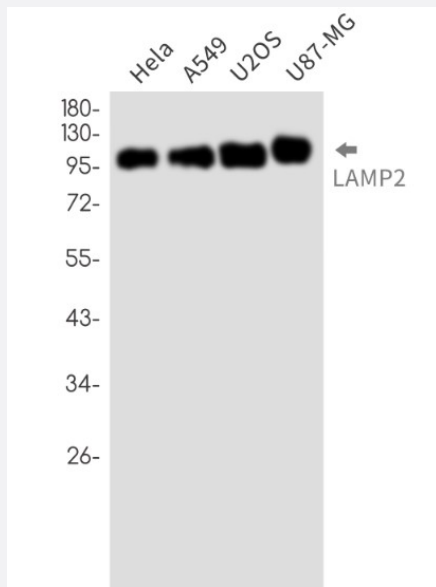


RecomAb™

# LAMP2 recombinant monoclonal antibody, clone R03-0B5

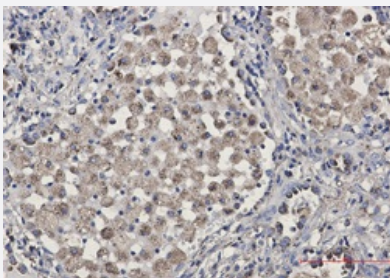
Catalog # RAB01418      Size 100 uL

## Applications



### Western Blot

Western Blot analysis of HeLa, A549, U2OS, U87-MG lysates with LAMP2 recombinant monoclonal antibody, clone R03-0B5 (Cat # RAB01418).



### Immunohistochemistry (Formalin/PFA-fixed paraffin-embedded sections)

Immunohistochemistry analysis of paraffin-embedded Human lung cancer using LAMP2 antibody. High-pressure and temperature Sodium Citrate pH 6.0 was used for antigen retrieval.

## Specification

<b>Product Description</b>	Rabbit recombinant monoclonal antibody raised against human LAMP2.
<b>Antibody Species</b>	Rabbit
<b>Immunogen</b>	Original antibody is raised against recombinant protein corresponding to human LAMP2.

Theoretical MW (kDa)	Calculated MW: 45 kD
Reactivity	Human
Form	Liquid
Purification	Affinity purification
Isotype	IgG
Recommend Usage	Immunohistochemistry (Formalin/PFA-fixed paraffin-embedded sections) Western Blot The optimal working dilution should be determined by the end user.
Storage Buffer	In 50mM Tris-Glycine, pH 7.4, (0.15M NaCl, 40% Glycerol, 0.01% Sodium azide and 0.05% BSA)
Storage Instruction	Store at 4°C. For longer storage, aliquot and store at -20°C. Aliquot to avoid repeated freezing and thawing.
Note	This product contains sodium azide: a POISONOUS AND HAZARDOUS SUBSTANCE which should be handled by trained staff only.

## Applications

- Western Blot

Western Blot analysis of Hela, A549, U2OS, U87-MG lysates with LAMP2 recombinant monoclonal antibody, clone R03-0B5 (Cat # RAB01418).

- Immunohistochemistry (Formalin/PFA-fixed paraffin-embedded sections)

Immunohistochemistry analysis of paraffin-embedded Human lung cancer using LAMP2 antibody. High-pressure and temperature Sodium Citrate pH 6.0 was used for antigen retrieval.

## Gene Info — LAMP2

Entrez GeneID	<a href="#">3920</a>
Protein Accession#	<a href="#">P13473</a>
Gene Name	LAMP2
Gene Alias	CD107b, LAMPB, LGP110
Gene Description	lysosomal-associated membrane protein 2
Omim ID	<a href="#">300257</a> <a href="#">309060</a>

## Gene Ontology

[Hyperlink](#)

## Gene Summary

The protein encoded by this gene is a member of a family of membrane glycoproteins. This glyco protein provides selectins with carbohydrate ligands. It may play a role in tumor cell metastasis. It may also function in the protection, maintenance, and adhesion of the lysosome. Alternative splicing of this gene results in multiple transcript variants encoding distinct proteins. [provided by RefSeq]

## Other Designations

OTTHUMP00000023943|OTTHUMP00000023944|lysosome-associated membrane protein 2

## Pathway

- [Lysosome](#)

## Disease

- [Cardiomegaly](#)
- [Cardiomyopathy](#)
- [Cardiovascular Diseases](#)
- [Diabetes Mellitus](#)
- [Edema](#)
- [Genetic Predisposition to Disease](#)