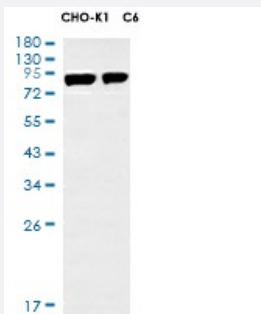


RecomAb™

# Mfn1 recombinant monoclonal antibody, clone R05-3A8

Catalog # RAB01412      Size 100 uL

## Applications



### Western Blot

Western blot analysis of Mitofusin 1 in CHO-K1, C6 lysates using Mitofusin 1 antibody.

## Specification

<b>Product Description</b>	Rabbit recombinant monoclonal antibody raised against rat Mfn1.
<b>Antibody Species</b>	Rabbit
<b>Immunogen</b>	Original antibody is raised against recombinant protein corresponding to rat Mfn1.
<b>Theoretical MW (kDa)</b>	Calculated MW: 84 kD
<b>Reactivity</b>	Rat
<b>Form</b>	Liquid
<b>Purification</b>	Affinity purification
<b>Isotype</b>	IgG
<b>Recommend Usage</b>	Immunoprecipitation Western Blot The optimal working dilution should be determined by the end user.
<b>Storage Buffer</b>	In 50mM Tris-Glycine, pH 7.4, (0.15M NaCl, 40% Glycerol, 0.01% Sodium azide and 0.05% BSA)

**Storage Instruction**

Store at 4°C. For longer storage, aliquot and store at -20°C.  
Aliquot to avoid repeated freezing and thawing.

**Note**

This product contains sodium azide: a POISONOUS AND HAZARDOUS SUBSTANCE which should be handled by trained staff only.

## Applications

- Western Blot

Western blot analysis of Mitofusin 1 in CHO-K1, C6 lysates using Mitofusin 1 antibody.

- Immunoprecipitation

## Gene Info — Mfn1

<b>Entrez GeneID</b>	<a href="#">192647</a>
----------------------	------------------------

<b>Protein Accession#</b>	<a href="#">Q8R4Z9</a>
---------------------------	------------------------

<b>Gene Name</b>	Mfn1
------------------	------

<b>Gene Alias</b>	Fzo1b
-------------------	-------

<b>Gene Description</b>	mitofusin 1
-------------------------	-------------

<b>Gene Ontology</b>	<a href="#">Hyperlink</a>
----------------------	---------------------------

<b>Other Designations</b>	mitochondrial transmembrane GTPase FZO1B
---------------------------	--