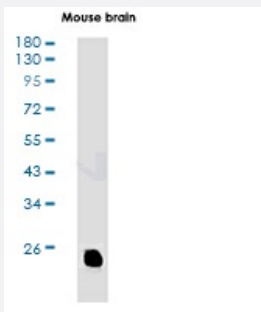


RecomAb™

MRAS recombinant monoclonal antibody, clone R07-2A5

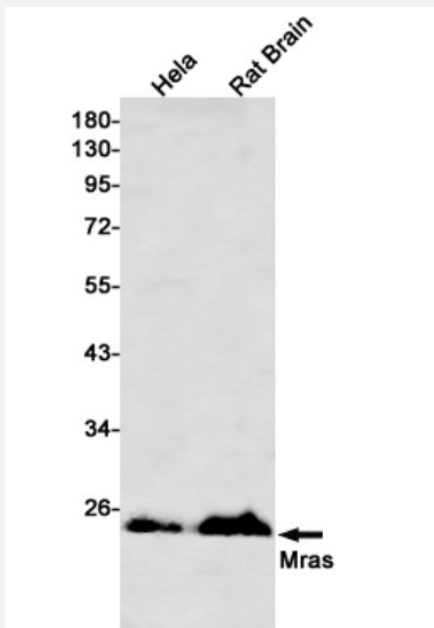
Catalog # RAB01409 Size 100 uL

Applications



Western Blot

Western blot analysis of Mras in mouse brain lysates using MRAS antibody.



Western Blot

Western Blot analysis of HeLa, rat Brain lysates with MRAS recombinant monoclonal antibody, clone R07-2A5 (Cat # RAB01409).

Specification

Product Description	Rabbit recombinant monoclonal antibody raised against human MRAS.
Antibody Species	Rabbit

Immunogen	Original antibody is raised against recombinant protein corresponding to human MRAS.
Theoretical MW (kDa)	Calculated MW: 24 kD
Reactivity	Human
Form	Liquid
Purification	Affinity purification
Isotype	IgG
Recommend Usage	Immunoprecipitation Western Blot The optimal working dilution should be determined by the end user.
Storage Buffer	In 50mM Tris-Glycine, pH 7.4, (0.15M NaCl, 40% Glycerol, 0.01% Sodium azide and 0.05% BSA)
Storage Instruction	Store at 4°C. For longer storage, aliquot and store at -20°C. Aliquot to avoid repeated freezing and thawing.
Note	This product contains sodium azide: a POISONOUS AND HAZARDOUS SUBSTANCE which should be handled by trained staff only.

Applications

- Western Blot

Western blot analysis of Mras in mouse brain lysates using MRAS antibody.

- Western Blot

Western Blot analysis of Hela, rat Brain lysates with MRAS recombinant monoclonal antibody, clone R07-2A5 (Cat # RAB01409).

- Immunoprecipitation

Gene Info — MRAS

Entrez GeneID	22808
Protein Accession#	O14807
Gene Name	MRAS
Gene Alias	FLJ42964, M-RAs, R-RAS3, RRAS3

Gene Description	muscle RAS oncogene homolog
Omim ID	608435
Gene Ontology	Hyperlink
Gene Summary	Members of the RAS superfamily of GTP-binding proteins, which includes MRAS, are membrane-anchored, intracellular signal transducers responsible for a variety of normal cellular functions. They are oncogenically activated in a significant fraction of tumors.[supplied by OMIM]
Other Designations	muscle and microspikes RAS

Pathway

- [MAPK signaling pathway](#)
- [Regulation of actin cytoskeleton](#)
- [Tight junction](#)

Disease

- [Coronary Artery Disease](#)
- [Coronary Disease](#)
- [Genetic Predisposition to Disease](#)
- [Myocardial Infarction](#)
- [Parkinson disease](#)