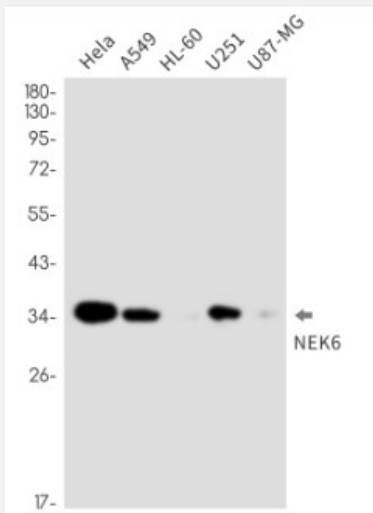


RecomAb™

NEK6 recombinant monoclonal antibody, clone R08-5G7

Catalog # RAB01403 Size 100 uL

Applications



Western Blot

Western Blot analysis of HeLa, A549, HL-60, U251, U87-MG lysates with NEK6 recombinant monoclonal antibody, clone R08-5G7 (Cat # RAB01403).

Specification

Product Description	Rabbit recombinant monoclonal antibody raised against human NEK6.
Antibody Species	Rabbit
Immunogen	Original antibody is raised against recombinant protein corresponding to human NEK6.
Theoretical MW (kDa)	Calculated MW: 36 kD
Reactivity	Human
Form	Liquid
Purification	Affinity purification
Isotype	IgG

Recommend Usage	Immunoprecipitation Western Blot The optimal working dilution should be determined by the end user.
Storage Buffer	In 50mM Tris-Glycine, pH 7.4, (0.15M NaCl, 40% Glycerol, 0.01% Sodium azide and 0.05% BSA)
Storage Instruction	Store at 4°C. For longer storage, aliquot and store at -20°C. Aliquot to avoid repeated freezing and thawing.
Note	This product contains sodium azide: a POISONOUS AND HAZARDOUS SUBSTANCE which should be handled by trained staff only.

Applications

- Western Blot

Western Blot analysis of HeLa, A549, HL-60, U251, U87-MG lysates with NEK6 recombinant monoclonal antibody, clone R08-5G7 (Cat # RAB01403).

- Immunoprecipitation

Gene Info — NEK6

Entrez GeneID	10783
Protein Accession#	Q9HC98
Gene Name	NEK6
Gene Alias	SID6-1512
Gene Description	NIMA (never in mitosis gene a)-related kinase 6
Omim ID	604884
Gene Ontology	Hyperlink
Gene Summary	The Aspergillus nidulans 'never in mitosis A' (NIMA) gene encodes a serine/threonine kinase that controls initiation of mitosis. NIMA-related kinases (NEKs) are a group of protein kinases that are homologous to NIMA. Evidence suggests that NEKs perform functions similar to those of NIMA.[s applied by OMIM
Other Designations	OTTHUMP00000022095 OTTHUMP00000022097 putative serine-threonine protein kinase

Disease

- [Genetic Predisposition to Disease](#)
- [Narcolepsy](#)
- [Tobacco Use Disorder](#)