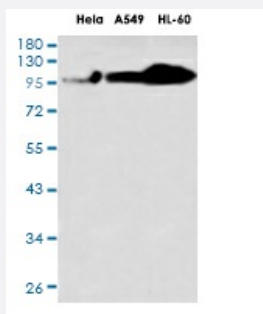


RecomAb™

NCL recombinant monoclonal antibody, clone R08-6H3

Catalog # RAB01398 Size 100 uL

Applications



Western Blot

Western blot analysis of Nucleolin in HeLa, A549, HL-60 lysates using Nucleolin antibody.

Specification

| | |
|-----------------------------|---|
| Product Description | Rabbit recombinant monoclonal antibody raised against human NCL. |
| Antibody Species | Rabbit |
| Immunogen | Original antibody is raised against recombinant protein corresponding to human NCL. |
| Theoretical MW (kDa) | Calculated MW: 77 kD |
| Reactivity | Human |
| Form | Liquid |
| Purification | Affinity purification |
| Isotype | IgG |
| Recommend Usage | Immunoprecipitation Western Blot The optimal working dilution should be determined by the end user. |
| Storage Buffer | In 50mM Tris-Glycine, pH 7.4, (0.15M NaCl, 40% Glycerol, 0.01% Sodium azide and 0.05% BSA) |

Storage Instruction

Store at 4°C. For longer storage, aliquot and store at -20°C.
Aliquot to avoid repeated freezing and thawing.

Note

This product contains sodium azide: a POISONOUS AND HAZARDOUS SUBSTANCE which should be handled by trained staff only.

Applications

- Western Blot

Western blot analysis of Nucleolin in Hela, A549, HL-60 lysates using Nucleolin antibody.

- Immunoprecipitation

Gene Info — NCL

Entrez GeneID [4691](#)

Protein Accession# [P19338](#)

Gene Name NCL

Gene Alias C23, FLJ45706

Gene Description nucleolin

Omim ID [164035](#)

Gene Ontology [Hyperlink](#)

Gene Summary Nucleolin (NCL), a eukaryotic nucleolar phosphoprotein, is involved in the synthesis and maturation of ribosomes. It is located mainly in dense fibrillar regions of the nucleolus. Human NCL gene consists of 14 exons with 13 introns and spans approximately 11kb. The intron 11 of the NCL gene encodes a small nucleolar RNA, termed U20. [provided by RefSeq]

Other Designations -

Pathway

- [Pathogenic Escherichia coli infection - EHEC](#)