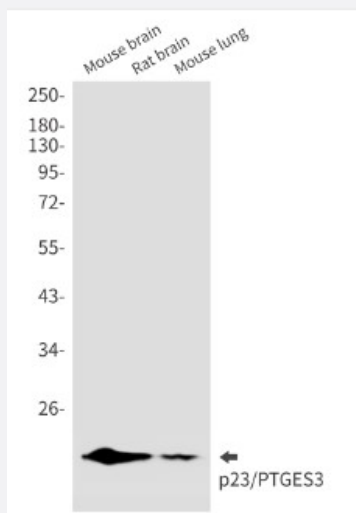


RecomAb™

PTGES3 recombinant monoclonal antibody, clone R03-2A6

Catalog # RAB01393 Size 100 uL

Applications



Western Blot

Western Blot analysis of mouse brain, rat brain, mouse lung lysates with PTGES3 recombinant monoclonal antibody, clone R03-2A6 (Cat # RAB01393).

Immunocytochemistry

Immunocytochemistry staining of HeLa cells with PTGES3 recombinant monoclonal antibody, clone R03-2A6 (Cat # RAB01393).

Specification

Product Description	Rabbit recombinant monoclonal antibody raised against human PTGES3.
Antibody Species	Rabbit
Immunogen	Original antibody is raised against recombinant protein corresponding to human PTGES3.
Theoretical MW (kDa)	Calculated MW: 19 kD

Reactivity	Human
Form	Liquid
Purification	Affinity purification
Isotype	IgG
Recommend Usage	Immunocytochemistry Immunofluorescence Immunoprecipitation Western Blot The optimal working dilution should be determined by the end user.
Storage Buffer	In 50mM Tris-Glycine, pH 7.4, (0.15M NaCl, 40% Glycerol, 0.01% Sodium azide and 0.05% BSA)
Storage Instruction	Store at 4°C. For longer storage, aliquot and store at -20°C. Aliquot to avoid repeated freezing and thawing.
Note	This product contains sodium azide: a POISONOUS AND HAZARDOUS SUBSTANCE which should be handled by trained staff only.

Applications

- Western Blot

Western Blot analysis of mouse brain, rat brain, mouse lung lysates with PTGES3 recombinant monoclonal antibody, clone R03-2A6 (Cat # RAB01393).

- Immunocytochemistry

Immunocytochemistry staining of HeLa cells with PTGES3 recombinant monoclonal antibody, clone R03-2A6 (Cat # RAB01393).

- Immunofluorescence

- Immunoprecipitation

Gene Info — PTGES3

Entrez GeneID	10728
Protein Accession#	Q15185
Gene Name	PTGES3

Gene Alias	P23, TEBP, cPGES
Gene Description	prostaglandin E synthase 3 (cytosolic)
Omim ID	607061
Gene Ontology	Hyperlink
Gene Summary	23 kD
Other Designations	cytosolic prostaglandin E synthase inactive progesterone receptor, 23 kD

Disease

- [Asthma](#)