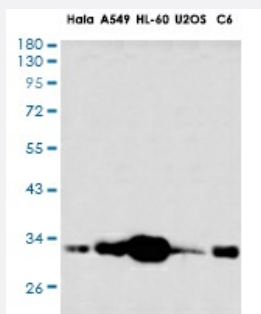


RecomAb™

# PHB1 recombinant monoclonal antibody, clone R07-2G1

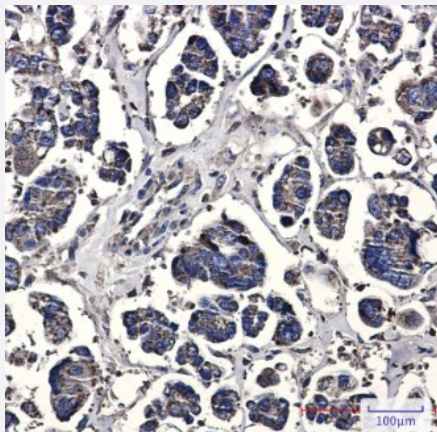
Catalog # RAB01378      Size 100 uL

## Applications



### Western Blot

Western blot analysis of Prohibitin in HeLa, A549, HL-60, U2OS, C6 lysates using Prohibitin antibody.



### Immunohistochemistry (Formalin/PFA-fixed paraffin-embedded sections)

Immunohistochemical staining (Formalin-fixed paraffin-embedded sections) of human cholangiocarcinoma with PHB1 recombinant monoclonal antibody, clone R07-2G1 (Cat # RAB01378).

### Immunocytochemistry

Immunocytochemistry staining of HeLa cells with PHB1 recombinant monoclonal antibody, clone R07-2G1 (Cat # RAB01378).

## Specification

<b>Product Description</b>	Rabbit recombinant monoclonal antibody raised against human PHB1.
<b>Antibody Species</b>	Rabbit
<b>Immunogen</b>	Original antibody is raised against recombinant protein corresponding to human PHB1.
<b>Theoretical MW (kDa)</b>	Calculated MW: 30 kD
<b>Reactivity</b>	Human
<b>Form</b>	Liquid
<b>Purification</b>	Affinity purification
<b>Isotype</b>	IgG
<b>Recommend Usage</b>	Immunocytochemistry Immunofluorescence Immunohistochemistry (Frozen sections) Immunohistochemistry (Formalin/PFA-fixed paraffin-embedded sections) Immunoprecipitation Western Blot The optimal working dilution should be determined by the end user.
<b>Storage Buffer</b>	In 50mM Tris-Glycine, pH 7.4, (0.15M NaCl, 40% Glycerol, 0.01% Sodium azide and 0.05% BSA)
<b>Storage Instruction</b>	Store at 4°C. For longer storage, aliquot and store at -20°C. Aliquot to avoid repeated freezing and thawing.
<b>Note</b>	This product contains sodium azide: a POISONOUS AND HAZARDOUS SUBSTANCE which should be handled by trained staff only.

## Applications

- Western Blot

Western blot analysis of Prohibitin in Hela, A549, HL-60, U2OS, C6 lysates using Prohibitin antibody.

- Immunohistochemistry (Formalin/PFA-fixed paraffin-embedded sections)

Immunohistochemical staining (Formalin-fixed paraffin-embedded sections) of human cholangiocarcinoma with PHB1 recombinant monoclonal antibody, clone R07-2G1 (Cat # RAB01378).

- Immunohistochemistry (Frozen sections)

- Immunocytochemistry

Immunocytochemistry staining of HeLa cells with PHB1 recombinant monoclonal antibody, clone R07-2G1 (Cat # RAB01378).

- Immunofluorescence

- Immunoprecipitation

## Gene Info — PHB

Entrez GeneID	<a href="#">5245</a>
---------------	----------------------

Protein Accession#	<a href="#">P35232</a>
--------------------	------------------------

Gene Name	PHB
-----------	-----

Gene Alias	PHB1
------------	------

Gene Description	prohibitin
------------------	------------

Omim ID	<a href="#">176705</a>
---------	------------------------

Gene Ontology	<a href="#">Hyperlink</a>
---------------	---------------------------

Gene Summary	Prohibitin is an evolutionarily conserved gene that is ubiquitously expressed. It is thought to be a negative regulator of cell proliferation and may be a tumor suppressor. Mutations in PHB have been linked to sporadic breast cancer. Prohibitin is expressed as two transcripts with varying lengths of 3' untranslated region. The longer transcript is present at higher levels in proliferating tissues and cells, suggesting that this longer 3' untranslated region may function as a trans-acting regulatory RNA. [provided by RefSeq]
--------------	---

Other Designations	-
--------------------	---

## Disease

- [Breast cancer](#)
- [Breast Neoplasms](#)
- [Genetic Predisposition to Disease](#)
- [Lung Neoplasms](#)
- [Ovarian cancer](#)
- [Ovarian Neoplasms](#)

- [Pulmonary Disease](#)
- [Urinary Bladder Neoplasms](#)
- [Werner syndrome](#)