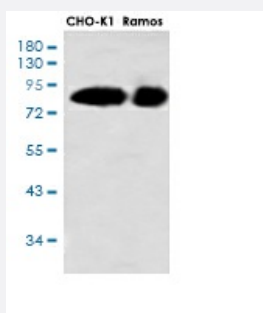


RecomAb™

RPS6KA3 recombinant monoclonal antibody, clone R05-6E3

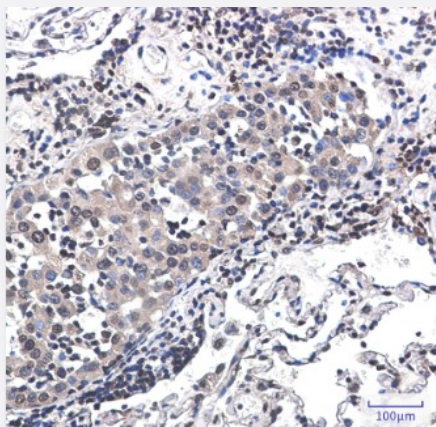
Catalog # RAB01367 Size 100 uL

Applications



Western Blot

Western blot analysis of Rsk 2/MAPKAP Kinase 1b in CHO-K1, Ramos lysates using RSK2 antibody.



Immunohistochemistry (Formalin/PFA-fixed paraffin-embedded sections)

Immunohistochemical staining (Formalin-fixed paraffin-embedded sections) of human lung cancer with RPS6KA3 recombinant monoclonal antibody, clone R05-6E3 (Cat # RAB01367).

Specification

Product Description	Rabbit recombinant monoclonal antibody raised against human RPS6KA3.
Antibody Species	Rabbit
Immunogen	Original antibody is raised against recombinant protein corresponding to human RPS6KA3.
Theoretical MW (kDa)	Calculated MW: 84 kD
Reactivity	Human

Form	Liquid
Purification	Affinity purification
Isotype	IgG
Recommend Usage	Immunohistochemistry (Formalin/PFA-fixed paraffin-embedded sections) Immunoprecipitation Western Blot The optimal working dilution should be determined by the end user.
Storage Buffer	In 50mM Tris-Glycine, pH 7.4, (0.15M NaCl, 40% Glycerol, 0.01% Sodium azide and 0.05% BSA)
Storage Instruction	Store at 4°C. For longer storage, aliquot and store at -20°C. Aliquot to avoid repeated freezing and thawing.
Note	This product contains sodium azide: a POISONOUS AND HAZARDOUS SUBSTANCE which should be handled by trained staff only.

Applications

- Western Blot

Western blot analysis of Rsk 2/MAPKAP Kinase 1b in CHO-K1, Ramos lysates using RSK2 antibody.

- Immunohistochemistry (Formalin/PFA-fixed paraffin-embedded sections)

Immunohistochemical staining (Formalin-fixed paraffin-embedded sections) of human lung cancer with RPS6KA3 recombinant monoclonal antibody, clone R05-6E3 (Cat # RAB01367).

- Immunoprecipitation

Gene Info — RPS6KA3

Entrez GeneID	6197
Protein Accession#	P51812
Gene Name	RPS6KA3
Gene Alias	CLS, HU-3, ISPK-1, MAPKAPK1B, MRX19, RSK, RSK2, S6K-alpha3, p90-RSK2, pp90RSK2
Gene Description	ribosomal protein S6 kinase, 90kDa, polypeptide 3
Omim ID	300075 303600
Gene Ontology	Hyperlink

Gene Summary

This gene encodes a member of the RSK (ribosomal S6 kinase) family of serine/threonine kinases. This kinase contains 2 non-identical kinase catalytic domains and phosphorylates various substrates, including members of the mitogen-activated kinase (MAPK) signalling pathway. The activity of this protein has been implicated in controlling cell growth and differentiation. Mutations in this gene have been associated with Coffin-Lowry syndrome (CLS). [provided by RefSeq]

Other Designations

OTTHUMP00000023036|insulin-stimulated protein kinase 1|mental retardation, X-linked 19|ribosomal protein S6 kinase, 90kD, polypeptide 3

Pathway

- [Long-term potentiation](#)
- [MAPK signaling pathway](#)
- [mTOR signaling pathway](#)
- [Neurotrophin signaling pathway](#)

Disease

- [Head and Neck Neoplasms](#)
- [Neoplasm Recurrence](#)
- [Neoplasms](#)