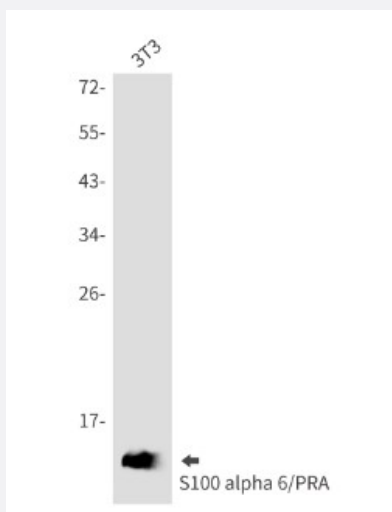


RecomAb™

S100A6 recombinant monoclonal antibody, clone R01-8A4

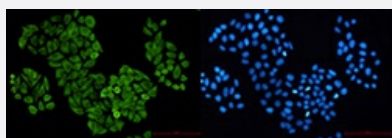
Catalog # RAB01366 Size 100 uL

Applications



Western Blot

Western Blot analysis of 3T3 cells with S100A6 recombinant monoclonal antibody, clone R01-8A4 (Cat # RAB01366).



Immunocytochemistry

Immunocytochemistry analysis of S100 alpha 6/PRA (green) in hela using S100 alpha 6/PRA antibody, and DAPI (blue)

Specification

Product Description	Rabbit recombinant monoclonal antibody raised against human S100A6.
Antibody Species	Rabbit
Immunogen	Original antibody is raised against recombinant protein corresponding to human S100A6.
Theoretical MW (kDa)	Calculated MW: 10 kD

Reactivity	Human
Form	Liquid
Purification	Affinity purification
Isotype	IgG
Recommend Usage	Immunocytochemistry Immunofluorescence Immunoprecipitation Western Blot The optimal working dilution should be determined by the end user.
Storage Buffer	In 50mM Tris-Glycine, pH 7.4, (0.15M NaCl, 40% Glycerol, 0.01% Sodium azide and 0.05% BSA)
Storage Instruction	Store at 4°C. For longer storage, aliquot and store at -20°C. Aliquot to avoid repeated freezing and thawing.
Note	This product contains sodium azide: a POISONOUS AND HAZARDOUS SUBSTANCE which should be handled by trained staff only.

Applications

- Western Blot

Western Blot analysis of 3T3 cells with S100A6 recombinant monoclonal antibody, clone R01-8A4 (Cat # RAB01366).

- Immunocytochemistry

Immunocytochemistry analysis of S100 alpha 6/PRA (green) in hela using S100 alpha 6/PRA antibody, and DAPI (blue)

- Immunofluorescence

- Immunoprecipitation

Gene Info — S100A6

Entrez GeneID	6277
Protein Accession#	P06703
Gene Name	S100A6
Gene Alias	2A9, 5B10, CABP, CACY, PRA

Gene Description	S100 calcium binding protein A6
Omim ID	114110
Gene Ontology	Hyperlink
Gene Summary	The protein encoded by this gene is a member of the S100 family of proteins containing 2 EF-hand calcium-binding motifs. S100 proteins are localized in the cytoplasm and/or nucleus of a wide range of cells, and involved in the regulation of a number of cellular processes such as cell cycle progression and differentiation. S100 genes include at least 13 members which are located as a cluster on chromosome 1q21. This protein may function in stimulation of Ca ²⁺ -dependent insulin release, stimulation of prolactin secretion, and exocytosis. Chromosomal rearrangements and altered expression of this gene have been implicated in melanoma. [provided by RefSeq]
Other Designations	OTTHUMP00000015472 OTTHUMP00000015473 S100 calcium-binding protein A6 S100 calcium-binding protein A6 (calcyclin) calcyclin prolactin receptor-associated protein

Disease

- [Alzheimer disease](#)
- [Cardiovascular Diseases](#)
- [Dermatitis](#)
- [Diabetes Complications](#)
- [Genetic Predisposition to Disease](#)
- [Metabolic Syndrome X](#)
- [Neoplasms](#)
- [Osteoporosis](#)