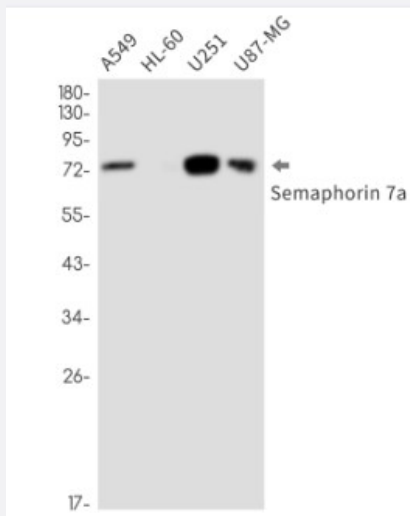


RecomAb™

# SEMA7A recombinant monoclonal antibody, clone R01-0F8

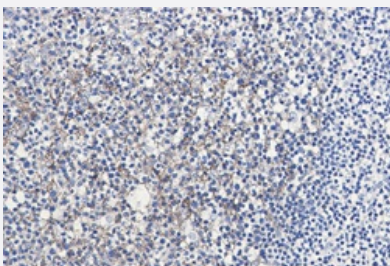
Catalog # RAB01364      Size 100 uL

## Applications



### Western Blot

Western Blot analysis of A549, HL-60, U251, U87-MG lysates with SEMA7A recombinant monoclonal antibody, clone R01-0F8 (Cat # RAB01364).



### Immunohistochemistry (Formalin/PFA-fixed paraffin-embedded sections)

Immunohistochemistry analysis of paraffin-embedded Human tonsil using Semaphorin 7a antibody. High-pressure and temperature Sodium Citrate pH 6.0 was used for antigen retrieval.

## Specification

|                      |  |
|----------------------|--|
| Product Description  | Rabbit recombinant monoclonal antibody raised against human SEMA7A.                    |
| Antibody Species     | Rabbit   |
| Immunogen            | Original antibody is raised against recombinant protein corresponding to human SEMA7A. |
| Theoretical MW (kDa) | Calculated MW: 75 kD   |

|                     |   |
|---------------------|---|
| Reactivity          | Human   |
| Form                | Liquid  |
| Purification        | Affinity purification   |
| Isotype             | IgG   |
| Recommend Usage     | Immunohistochemistry (Formalin/PFA-fixed paraffin-embedded sections)<br>Immunoprecipitation<br>Western Blot<br>The optimal working dilution should be determined by the end user. |
| Storage Buffer      | In 50mM Tris-Glycine, pH 7.4, (0.15M NaCl, 40% Glycerol, 0.01% Sodium azide and 0.05% BSA)  |
| Storage Instruction | Store at 4°C. For longer storage, aliquot and store at -20°C.<br>Aliquot to avoid repeated freezing and thawing.  |
| Note                | This product contains sodium azide: a POISONOUS AND HAZARDOUS SUBSTANCE which should be handled by trained staff only.  |

## Applications

- Western Blot

Western Blot analysis of A549, HL-60, U251, U87-MG lysates with SEMA7A recombinant monoclonal antibody, clone R01-0F8 (Cat # RAB01364).

- Immunohistochemistry (Formalin/PFA-fixed paraffin-embedded sections)

Immunohistochemistry analysis of paraffin-embedded Human tonsil using Semaphorin 7a antibody. High-pressure and temperature Sodium Citrate pH 6.0 was used for antigen retrieval.

- Immunoprecipitation

## Gene Info — SEMA7A

|                    |   |
|--------------------|---|
| Entrez GeneID      | <a href="#">8482</a>  |
| Protein Accession# | <a href="#">O75326</a>  |
| Gene Name          | SEMA7A  |
| Gene Alias         | CD108, CDw108, H-SEMA-K1, H-Sema-L, JMH, MGC126692, MGC126696, SEMAK1, SEMA L |
| Gene Description   | semaphorin 7A, GPI membrane anchor (John Milton Hagen blood group)            |

Omim ID [607961](#)

Gene Ontology [Hyperlink](#)

**Gene Summary**

The protein encoded by this gene binds to cell surfaces through a glycosylphosphatidylinositol (GPI) linkage. The encoded glycoprotein is found on activated lymphocytes and erythrocytes. This protein may be involved in immunomodulatory and neuronal processes. Defects in this gene can result in loss of bone mineral density (BMD). Three transcript variants encoding different isoforms have been found for this gene

**Other Designations**

John Milton Hagen blood group H-Sema K1|sema domain, immunoglobulin domain (Ig), and GPI membrane anchor, (semaphorin) 7A (JMH blood group)|sema domain, immunoglobulin domain (Ig), and GPI membrane anchor, 7A|semaphorin 7A|semaphorin K1|semaphorin L

## Pathway

- [Axon guidance](#)

## Disease

- [Fractures](#)
- [Genetic Predisposition to Disease](#)
- [Osteoporosis](#)