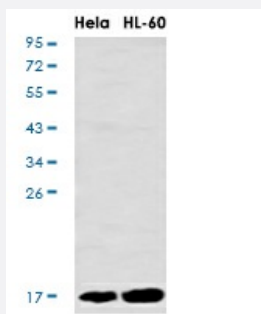


RecomAb™

# UBE2D1 recombinant monoclonal antibody, clone R07-4E8

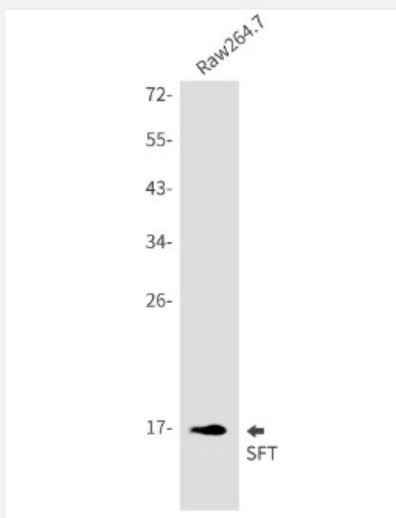
Catalog # RAB01363      Size 100 uL

## Applications



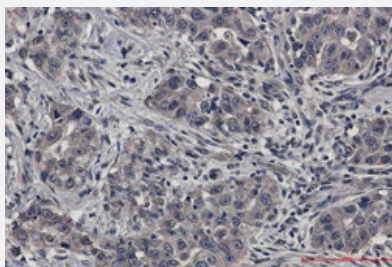
### Western Blot

Western blot analysis of SFT in HeLa, HL-60 lysates using SFT antibody.



### Western Blot

Western Blot analysis of Raw 264.7 cells with UBE2D1 recombinant monoclonal antibody, clone R07-4E8 (Cat # RAB01363).



### Immunohistochemistry (Formalin/PFA-fixed paraffin-embedded sections)

Immunohistochemistry analysis of paraffin-embedded Human lung cancer using SFT antibody. High-pressure and temperature Sodium Citrate pH 6.0 was used for antigen retrieval.

## Specification

<b>Product Description</b>	Rabbit recombinant monoclonal antibody raised against human UBE2D1.
<b>Antibody Species</b>	Rabbit
<b>Immunogen</b>	Original antibody is raised against recombinant protein corresponding to human UBE2D1.
<b>Theoretical MW (kDa)</b>	Calculated MW: 17 kD
<b>Reactivity</b>	Human
<b>Form</b>	Liquid
<b>Purification</b>	Affinity purification
<b>Isotype</b>	IgG
<b>Recommend Usage</b>	Immunohistochemistry (Formalin/PFA-fixed paraffin-embedded sections) Immunoprecipitation Western Blot The optimal working dilution should be determined by the end user.
<b>Storage Buffer</b>	In 50mM Tris-Glycine, pH 7.4, (0.15M NaCl, 40% Glycerol, 0.01% Sodium azide and 0.05% BSA)
<b>Storage Instruction</b>	Store at 4°C. For longer storage, aliquot and store at -20°C. Aliquot to avoid repeated freezing and thawing.
<b>Note</b>	This product contains sodium azide: a POISONOUS AND HAZARDOUS SUBSTANCE which should be handled by trained staff only.

## Applications

- Western Blot

Western blot analysis of SFT in Hela, HL-60 lysates using SFT antibody.

- Western Blot

Western Blot analysis of Raw 264.7 cells with UBE2D1 recombinant monoclonal antibody, clone R07-4E8 (Cat # RAB01363).

- Immunohistochemistry (Formalin/PFA-fixed paraffin-embedded sections)

Immunohistochemistry analysis of paraffin-embedded Human lung cancer using SFT antibody. High-pressure and temperature Sodium Citrate pH 6.0 was used for antigen retrieval.

- Immunoprecipitation

## Gene Info — UBE2D1

Entrez GeneID [7321](#)

Protein Accession# [P51668](#)

Gene Name UBE2D1

Gene Alias E2(17)KB1, SFT, UBC4/5, UBCH5, UBCH5A

Gene Description ubiquitin-conjugating enzyme E2D 1 (UBC4/5 homolog, yeast)

Omim ID [602961](#)

Gene Ontology [Hyperlink](#)

**Gene Summary**

The modification of proteins with ubiquitin is an important cellular mechanism for targeting abnormal or short-lived proteins for degradation. Ubiquitination involves at least three classes of enzymes: ubiquitin-activating enzymes, or E1s, ubiquitin-conjugating enzymes, or E2s, and ubiquitin-protein ligases, or E3s. This gene encodes a member of the E2 ubiquitin-conjugating enzyme family. This enzyme is closely related to a stimulator of iron transport (SFT), and is up-regulated in hereditary hemochromatosis. It also functions in the ubiquitination of the tumor-suppressor protein p53 and the hypoxia-inducible transcription factor HIF1alpha by interacting with the E1 ubiquitin-activating enzyme and the E3 ubiquitin-protein ligases. [provided by RefSeq]

**Other Designations**

OTTHUMP00000019631|stimulator of Fe transport|ubiquitin carrier protein|ubiquitin-conjugating enzyme E2-17 kDa 1|ubiquitin-conjugating enzyme E2D 1

## Pathway

- [Ubiquitin mediated proteolysis](#)

## Disease

- [Alzheimer disease](#)
- [Genetic Predisposition to Disease](#)