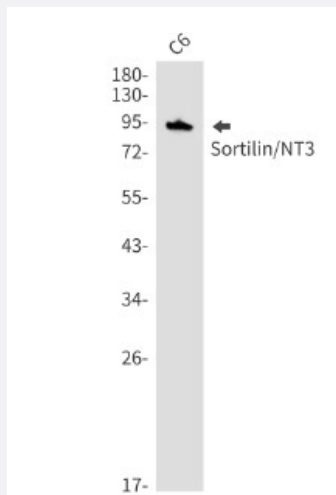


RecomAb™

SORT1 recombinant monoclonal antibody, clone R02-6B4

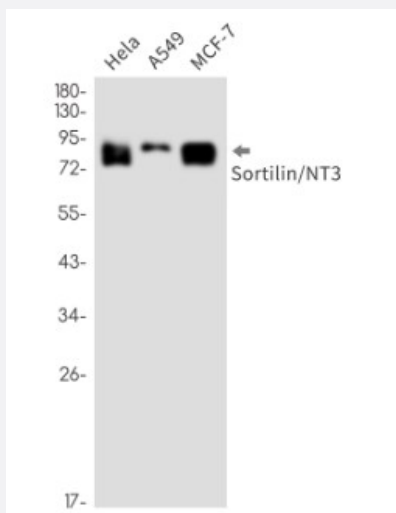
Catalog # RAB01357 Size 100 uL

Applications



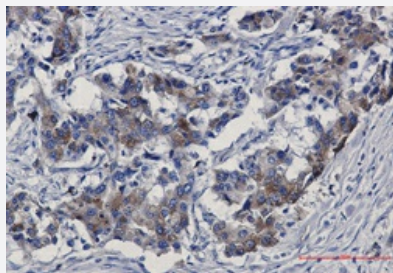
Western Blot

Western Blot analysis of C6 cells with SORT1 recombinant monoclonal antibody, clone R02-6B4 (Cat # RAB01357).



Western Blot

Western Blot analysis of HeLa, A549, MCF-7 lysates with SORT1 recombinant monoclonal antibody, clone R02-6B4 (Cat # RAB01357).



Immunohistochemistry (Formalin/PFA-fixed paraffin-embedded sections)

Immunohistochemistry analysis of paraffin-embedded Human lung cancer using Sortilin/NT3 antibody. High-pressure and temperature Sodium Citrate pH 6.0 was used for antigen retrieval.

Specification

Product Description	Rabbit recombinant monoclonal antibody raised against human SORT1.
Antibody Species	Rabbit
Immunogen	Original antibody is raised against recombinant protein corresponding to human SORT1.
Theoretical MW (kDa)	Calculated MW: 92 kD
Reactivity	Human
Form	Liquid
Purification	Affinity purification
Isotype	IgG
Recommend Usage	Immunohistochemistry (Formalin/PFA-fixed paraffin-embedded sections) Western Blot The optimal working dilution should be determined by the end user.
Storage Buffer	In 50mM Tris-Glycine, pH 7.4, (0.15M NaCl, 40% Glycerol, 0.01% Sodium azide and 0.05% BSA)
Storage Instruction	Store at 4°C. For longer storage, aliquot and store at -20°C. Aliquot to avoid repeated freezing and thawing.
Note	This product contains sodium azide: a POISONOUS AND HAZARDOUS SUBSTANCE which should be handled by trained staff only.

Applications

● Western Blot

Western Blot analysis of C6 cells with SORT1 recombinant monoclonal antibody, clone R02-6B4 (Cat # RAB01357).

- Western Blot

Western Blot analysis of Hela, A549, MCF-7 lysates with SORT1 recombinant monoclonal antibody, clone R02-6B4 (Cat # RAB01357).

- Immunohistochemistry (Formalin/PFA-fixed paraffin-embedded sections)

Immunohistochemistry analysis of paraffin-embedded Human lung cancer using Sortilin/NT3 antibody. High-pressure and temperature Sodium Citrate pH 6.0 was used for antigen retrieval.

Gene Info — SORT1

Entrez GeneID [6272](#)

Protein Accession# [Q99523](#)

Gene Name SORT1

Gene Alias Gp95, NT3

Gene Description sortilin 1

Omim ID [602458](#)

Gene Ontology [Hyperlink](#)

Gene Summary This gene encodes a protein that is a multi-ligand type-1 receptor with similarity to the yeast carboxypeptidase Y sorting receptor Vps10 protein. The encoded protein, a trans-Golgi network (TGN) transmembrane protein, binds a number of unrelated ligands that participate in a wide range of cellular processes; however, it lacks the typical features of a signalling receptor. In the TGN, furin mediates the activation of the mature binding form. The encoded protein consists of a large luminal domain, a single transmembrane segment and short C-terminal cytoplasmic tail. The luminal domain contains a cysteine-rich region similar to two corresponding segments in the yeast Vps10p; the cytoplasmic tail is similar to the corresponding segment of the cation-independent mannose 6-phosphate receptor and the tail also interacts with the VHS domains of GGA (Golgi-associated, gamma-adaptin homologous, ARF-interacting) proteins. [provided by RefSeq]

Other Designations OTTHUMP00000013784|neurotensin receptor 3

Pathway

- [Lysosome](#)
- [Neurotrophin signaling pathway](#)

Disease

- [Alzheimer Disease](#)
- [Coronary Artery Disease](#)
- [Coronary Disease](#)
- [Dementia](#)
- [Frontotemporal Lobar Degeneration](#)
- [Genetic Predisposition to Disease](#)
- [Lipid Metabolism Disorders](#)
- [Myocardial Infarction](#)
- [Ovarian Neoplasms](#)