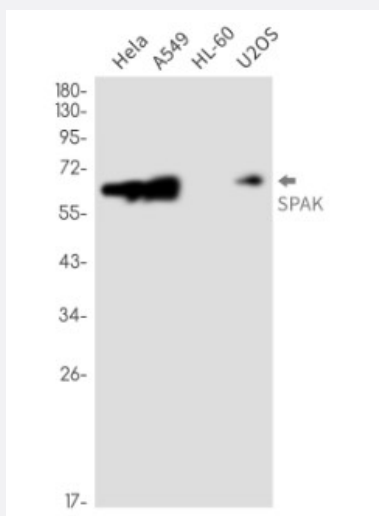


RecomAb™

STK39 recombinant monoclonal antibody, clone R06-2B0

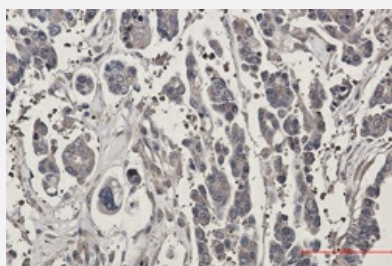
Catalog # RAB01356 Size 100 uL

Applications



Western Blot

Western Blot analysis of HeLa, A549, HL-60, U2OS lysates with STK39 recombinant monoclonal antibody, clone R06-2B0 (Cat # RAB01356).



Immunohistochemistry (Formalin/PFA-fixed paraffin-embedded sections)

Immunohistochemistry analysis of paraffin-embedded Human Cholangiocarcinoma using SPAK antibody. High-pressure and temperature Sodium Citrate pH 6.0 was used for antigen retrieval.

Specification

Product Description	Rabbit recombinant monoclonal antibody raised against human STK39.
Antibody Species	Rabbit
Immunogen	Original antibody is raised against recombinant protein corresponding to human STK39.
Theoretical MW (kDa)	Calculated MW: 59 kD

Reactivity	Human
Form	Liquid
Purification	Affinity purification
Isotype	IgG
Recommend Usage	Immunohistochemistry (Formalin/PFA-fixed paraffin-embedded sections) Western Blot The optimal working dilution should be determined by the end user.
Storage Buffer	In 50mM Tris-Glycine, pH 7.4, (0.15M NaCl, 40% Glycerol, 0.01% Sodium azide and 0.05% BSA)
Storage Instruction	Store at 4°C. For longer storage, aliquot and store at -20°C. Aliquot to avoid repeated freezing and thawing.
Note	This product contains sodium azide: a POISONOUS AND HAZARDOUS SUBSTANCE which should be handled by trained staff only.

Applications

- Western Blot

Western Blot analysis of Hela, A549, HL-60, U2OS lysates with STK39 recombinant monoclonal antibody, clone R06-2B0 (Cat # RAB01356).

- Immunohistochemistry (Formalin/PFA-fixed paraffin-embedded sections)

Immunohistochemistry analysis of paraffin-embedded Human Cholangiocarcinoma using SPAK antibody. High-pressure and temperature Sodium Citrate pH 6.0 was used for antigen retrieval.

Gene Info — STK39

Entrez GeneID	27347
Protein Accession#	Q9UEW8
Gene Name	STK39
Gene Alias	DCHT, DKFZp686K05124, PASK, SPAK
Gene Description	serine threonine kinase 39 (STE20/SPS1 homolog, yeast)
Omim ID	607648
Gene Ontology	Hyperlink

Gene Summary

This gene encodes a serine/threonine kinase that is thought to function in the cellular stress response pathway. The kinase is activated in response to hypotonic stress, leading to phosphorylation of several cation-chloride-coupled cotransporters. The catalytically active kinase specifically activates the p38 MAP kinase pathway, and its interaction with p38 decreases upon cellular stress, suggesting that this kinase may serve as an intermediate in the response to cellular stress. [provided by RefSeq]

Other Designations

Ste20-like protein kinase|proline-alanine-rich STE20-related kinase|small intestine SPAK-like kinase

Disease

- [Autistic Disorder](#)
- [Carcinoma](#)
- [Genetic Predisposition to Disease](#)
- [Hypertension](#)
- [Lung Neoplasms](#)
- [Tobacco Use Disorder](#)