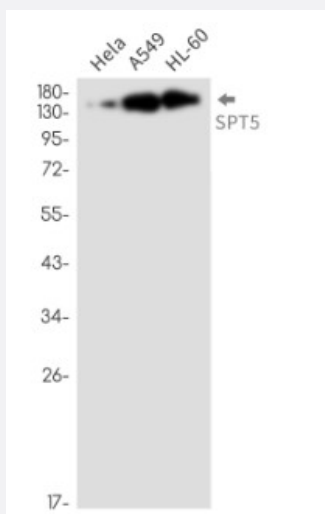


RecomAb™

SUPT5H recombinant monoclonal antibody, clone R01-5C2

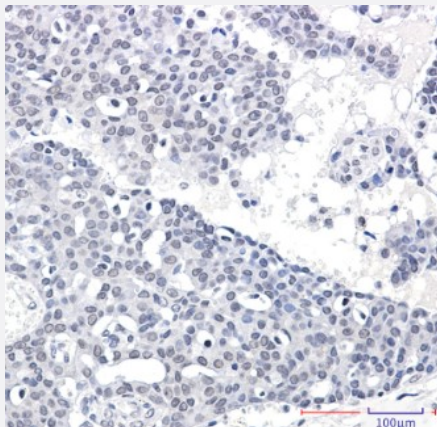
Catalog # RAB01355 Size 100 uL

Applications



Western Blot

Western Blot analysis of HeLa, A549, HL-60 lysates with SUPT5H recombinant monoclonal antibody, clone R01-5C2 (Cat # RAB01355).



Immunohistochemistry (Formalin/PFA-fixed paraffin-embedded sections)

Immunohistochemical staining (Formalin-fixed paraffin-embedded sections) of human breast cancer with SUPT5H recombinant monoclonal antibody, clone R01-5C2 (Cat # RAB01355).

Immunocytochemistry

Immunocytochemistry analysis of SPT5 (green) in HeLa using SPT5 antibody, and DAPI (blue).



Specification

Product Description	Rabbit recombinant monoclonal antibody raised against human SUPT5H.
Antibody Species	Rabbit
Immunogen	Original antibody is raised against recombinant protein corresponding to human SUPT5H.
Theoretical MW (kDa)	Calculated MW: 121 k
Reactivity	Human
Form	Liquid
Purification	Affinity purification
Isotype	IgG
Recommend Usage	Immunocytochemistry Immunofluorescence Immunohistochemistry (Frozen sections) Immunohistochemistry (Formalin/PFA-fixed paraffin-embedded sections) Western Blot The optimal working dilution should be determined by the end user.
Storage Buffer	In 50mM Tris-Glycine, pH 7.4, (0.15M NaCl, 40% Glycerol, 0.01% Sodium azide and 0.05% BSA)
Storage Instruction	Store at 4°C. For longer storage, aliquot and store at -20°C. Aliquot to avoid repeated freezing and thawing.
Note	This product contains sodium azide: a POISONOUS AND HAZARDOUS SUBSTANCE which should be handled by trained staff only.

Applications

- Western Blot

Western Blot analysis of Hela, A549, HL-60 lysates with SUPT5H recombinant monoclonal antibody, clone R01-5C2 (Cat # RAB01355).

- Immunohistochemistry (Formalin/PFA-fixed paraffin-embedded sections)

Immunohistochemical staining (Formalin-fixed paraffin-embedded sections) of human breast cancer with SUPT5H recombinant monoclonal antibody, clone R01-5C2 (Cat # RAB01355).

- Immunohistochemistry (Frozen sections)

- Immunocytochemistry

Immunocytochemistry analysis of SPT5 (green) in Hela using SPT5 antibody, and DAPI (blue).

- Immunofluorescence

Gene Info — SUPT5H

Entrez GeneID	6829
---------------	----------------------

Protein Accession#	O00267
--------------------	------------------------

Gene Name	SUPT5H
-----------	--------

Gene Alias	FLJ34157, SPT5, SPT5H
------------	-----------------------

Gene Description	suppressor of Ty 5 homolog (S. cerevisiae)
------------------	--

Omim ID	602102
---------	------------------------

Gene Ontology	Hyperlink
---------------	---------------------------

Other Designations	suppressor of Ty 5 homolog
--------------------	----------------------------