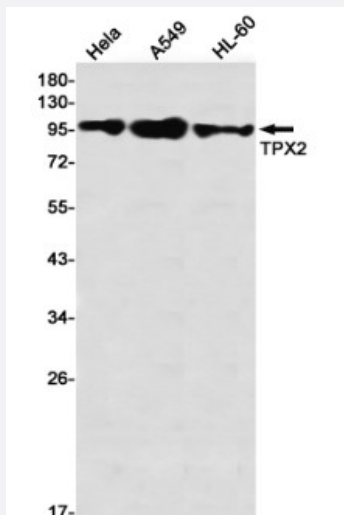


RecomAb™

# TPX2 recombinant monoclonal antibody, clone R01-8A6

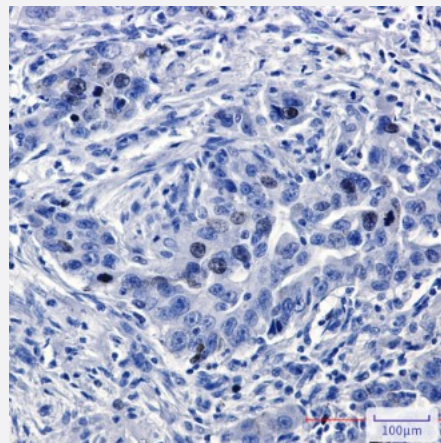
Catalog # RAB01343      Size 100 uL

## Applications



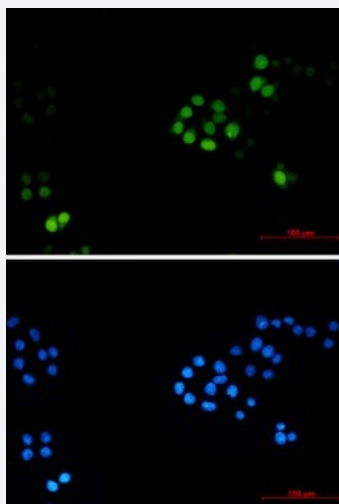
### Western Blot

Western Blot analysis of HeLa, A549, HL-60 lysates with TPX2 recombinant monoclonal antibody, clone R01-8A6 (Cat # RAB01343).



### Immunohistochemistry (Formalin/PFA-fixed paraffin-embedded sections)

Immunohistochemical staining (Formalin-fixed paraffin-embedded sections) of human lung cancer with TPX2 recombinant monoclonal antibody, clone R01-8A6 (Cat # RAB01343).



## Immunocytochemistry

Immunocytochemistry staining of HeLa cells with TPX2 recombinant monoclonal antibody, clone R01-8A6 (Cat # RAB01343).

## Specification

<b>Product Description</b>	Rabbit recombinant monoclonal antibody raised against human TPX2.
<b>Antibody Species</b>	Rabbit
<b>Immunogen</b>	Original antibody is raised against recombinant protein corresponding to human TPX2.
<b>Theoretical MW (kDa)</b>	Calculated MW: 86 kD
<b>Reactivity</b>	Human
<b>Form</b>	Liquid
<b>Purification</b>	Affinity purification
<b>Isotype</b>	IgG
<b>Recommend Usage</b>	Immunocytochemistry Immunofluorescence Immunohistochemistry (Frozen sections) Immunohistochemistry (Formalin/PFA-fixed paraffin-embedded sections) Immunoprecipitation Western Blot The optimal working dilution should be determined by the end user.
<b>Storage Buffer</b>	In 50mM Tris-Glycine, pH 7.4, (0.15M NaCl, 40% Glycerol, 0.01% Sodium azide and 0.05% BSA)
<b>Storage Instruction</b>	Store at 4°C. For longer storage, aliquot and store at -20°C. Aliquot to avoid repeated freezing and thawing.
<b>Note</b>	This product contains sodium azide: a POISONOUS AND HAZARDOUS SUBSTANCE which should be handled by trained staff only.

## Applications

- Western Blot

Western Blot analysis of HeLa, A549, HL-60 lysates with TPX2 recombinant monoclonal antibody, clone R01-8A6 (Cat # RAB01343).

- Immunohistochemistry (Formalin/PFA-fixed paraffin-embedded sections)

Immunohistochemical staining (Formalin-fixed paraffin-embedded sections) of human lung cancer with TPX2 recombinant monoclonal antibody, clone R01-8A6 (Cat # RAB01343).

- Immunohistochemistry (Frozen sections)

- Immunocytochemistry

Immunocytochemistry staining of HeLa cells with TPX2 recombinant monoclonal antibody, clone R01-8A6 (Cat # RAB01343).

- Immunofluorescence

- Immunoprecipitation

## Gene Info — TPX2

Entrez GeneID	<a href="#">22974</a>
---------------	-----------------------

Protein Accession#	<a href="#">Q9ULW0</a>
--------------------	------------------------

Gene Name	TPX2
-----------	------

Gene Alias	C20orf1, C20orf2, DIL-2, DIL2, FLS353, GD:C20orf1, HCA519, HCTP4, REPP86, p100
------------	--

Gene Description	TPX2, microtubule-associated, homolog (Xenopus laevis)
------------------	--

Omim ID	<a href="#">605917</a>
---------	------------------------

Gene Ontology	<a href="#">Hyperlink</a>
---------------	---------------------------

Gene Summary	microtubule-associated
--------------	------------------------

Other Designations	TPX2, microtubule-associated protein homolog differentially expressed in lung cells hepatocellular carcinoma-associated antigen 519 preferentially expressed in colorectal cancer restricted expression proliferation associated protein 100 targeting protein
--------------------	--

## Disease

- [Genetic Predisposition to Disease](#)
- [Hematologic Diseases](#)
- [Occupational Diseases](#)