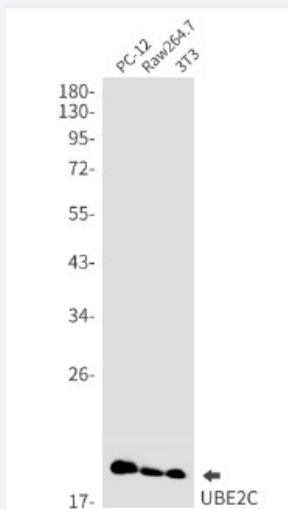


RecomAb™

UBE2C recombinant monoclonal antibody, clone R08-4F5

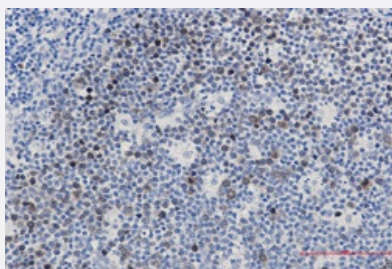
Catalog # RAB01338 Size 100 uL

Applications



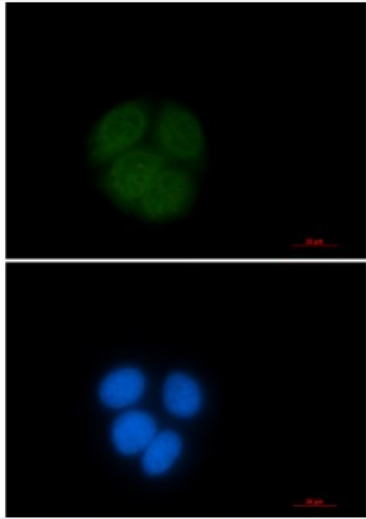
Western Blot

Western Blot analysis of PC-12, Raw264.7, 3T3 lysates with UBE2C recombinant monoclonal antibody, clone R08-4F5 (Cat # RAB01338).



Immunohistochemistry (Formalin/PFA-fixed paraffin-embedded sections)

Immunohistochemistry analysis of paraffin-embedded Human tonsil using UBE2C antibody. High-pressure and temperature Sodium Citrate pH 6.0 was used for antigen retrieval.



Immunocytochemistry

Immunocytochemistry staining of HeLa cells with UBE2C recombinant monoclonal antibody, clone R08-4F5 (Cat # RAB01338).

Specification

Product Description	Rabbit recombinant monoclonal antibody raised against human UBE2C.
Antibody Species	Rabbit
Immunogen	Original antibody is raised against recombinant protein corresponding to human UBE2C.
Theoretical MW (kDa)	Calculated MW: 20 kD
Reactivity	Human
Form	Liquid
Purification	Affinity purification
Isotype	IgG
Recommend Usage	Immunocytochemistry Immunofluorescence Immunohistochemistry (Frozen sections) Immunohistochemistry (Formalin/PFA-fixed paraffin-embedded sections) Immunoprecipitation Western Blot The optimal working dilution should be determined by the end user.
Storage Buffer	In 50mM Tris-Glycine, pH 7.4, (0.15M NaCl, 40% Glycerol, 0.01% Sodium azide and 0.05% BSA)
Storage Instruction	Store at 4°C. For longer storage, aliquot and store at -20°C. Aliquot to avoid repeated freezing and thawing.

Note

This product contains sodium azide: a POISONOUS AND HAZARDOUS SUBSTANCE which should be handled by trained staff only.

Applications

- Western Blot

Western Blot analysis of PC-12, Raw264.7, 3T3 lysates with UBE2C recombinant monoclonal antibody, clone R08-4F5 (Cat # RAB01338).

- Immunohistochemistry (Formalin/PFA-fixed paraffin-embedded sections)

Immunohistochemistry analysis of paraffin-embedded Human tonsil using UBE2C antibody. High-pressure and temperature Sodium Citrate pH 6.0 was used for antigen retrieval.

- Immunohistochemistry (Frozen sections)

- Immunocytochemistry

Immunocytochemistry staining of HeLa cells with UBE2C recombinant monoclonal antibody, clone R08-4F5 (Cat # RAB01338).

- Immunofluorescence

- Immunoprecipitation

Gene Info — UBE2C

Entrez GeneID	11065
---------------	-----------------------

Protein Accession#	O00762
--------------------	------------------------

Gene Name	UBE2C
-----------	-------

Gene Alias	UBCH10, dJ447F3.2
------------	-------------------

Gene Description	ubiquitin-conjugating enzyme E2C
------------------	----------------------------------

Omim ID	605574
---------	------------------------

Gene Ontology	Hyperlink
---------------	---------------------------

Gene Summary

The modification of proteins with ubiquitin is an important cellular mechanism for targeting abnormal or short-lived proteins for degradation. Ubiquitination involves at least three classes of enzymes: ubiquitin-activating enzymes, or E1s, ubiquitin-conjugating enzymes, or E2s, and ubiquitin-protein ligases, or E3s. This gene encodes a member of the E2 ubiquitin-conjugating enzyme family. This enzyme is required for the destruction of mitotic cyclins and for cell cycle progression. Multiple transcript variants encoding different isoforms have been found for this gene. [provided by RefSeq]

Other Designations

OTTHUMP00000031653|OTTHUMP00000031655|cyclin-selective ubiquitin carrier protein|mitotic-specific ubiquitin-conjugating enzyme|ubiquitin carrier protein E2-C|ubiquitin-protein ligase C

Pathway

- [Ubiquitin mediated proteolysis](#)

Disease

- [Cardiovascular Diseases](#)
- [Diabetes Mellitus](#)
- [Edema](#)