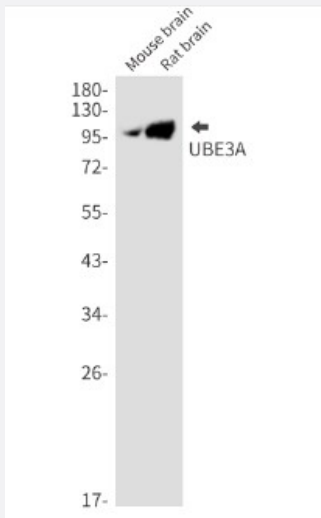


RecomAb™

UBE3A recombinant monoclonal antibody, clone R02-1A0

Catalog # RAB01336 Size 100 uL

Applications



Western Blot

Western Blot analysis of mouse brain, rat brain lysates with UBE3A recombinant monoclonal antibody, clone R02-1A0 (Cat # RAB01336).



Immunocytochemistry

Immunocytochemistry analysis of Ubiquitin Protein Ligase E3A (green) in HeLa using Ubiquitin Protein Ligase E3A antibody, and DAPI (blue).

Specification

Product Description	Rabbit recombinant monoclonal antibody raised against human UBE3A.
Antibody Species	Rabbit
Immunogen	Original antibody is raised against recombinant protein corresponding to human UBE3A.
Theoretical MW (kDa)	Calculated MW: 101 k

Reactivity	Human
Form	Liquid
Purification	Affinity purification
Isotype	IgG
Recommend Usage	Immunocytochemistry Immunofluorescence Immunoprecipitation Western Blot The optimal working dilution should be determined by the end user.
Storage Buffer	In 50mM Tris-Glycine, pH 7.4, (0.15M NaCl, 40% Glycerol, 0.01% Sodium azide and 0.05% BSA)
Storage Instruction	Store at 4°C. For longer storage, aliquot and store at -20°C. Aliquot to avoid repeated freezing and thawing.
Note	This product contains sodium azide: a POISONOUS AND HAZARDOUS SUBSTANCE which should be handled by trained staff only.

Applications

- Western Blot

Western Blot analysis of mouse brain, rat brain lysates with UBE3A recombinant monoclonal antibody, clone R02-1A0 (Cat # RAB01336).

- Immunocytochemistry

Immunocytochemistry analysis of Ubiquitin Protein Ligase E3A (green) in Hela using Ubiquitin Protein Ligase E3A antibody, and DAPI(blue).

- Immunofluorescence

- Immunoprecipitation

Gene Info — UBE3A

Entrez GeneID	7337
Protein Accession#	Q05086
Gene Name	UBE3A

Gene Alias	ANCR, AS, E6-AP, EPVE6AP, FLJ26981, HPVE6A
Gene Description	ubiquitin protein ligase E3A
Omim ID	105830 601623
Gene Ontology	Hyperlink
Gene Summary	<p>This gene encodes an E3 ubiquitin-protein ligase, part of the ubiquitin protein degradation system . This imprinted gene is maternally expressed in brain and biallelically expressed in other tissues. Maternally inherited deletion of this gene causes Angelman Syndrome, characterized by severe motor and intellectual retardation, ataxia, hypotonia, epilepsy, absence of speech, and characteristic facies. The protein also interacts with the E6 protein of human papillomavirus types 16 and 18, resulting in ubiquitination and proteolysis of tumor protein p53. Alternative splicing of this gene results in three transcript variants encoding three isoforms with different N-termini. Additional transcript variants have been described, but their full length nature has not been determined. [provided by RefSeq]</p>
Other Designations	CTCL tumor antigen se37-2 human papilloma virus E6-associated protein oncogenic protein-associated protein E6-AP

Pathway

- [Ubiquitin mediated proteolysis](#)

Disease

- [Attention Deficit Disorder with Hyperactivity](#)
- [Autistic Disorder](#)
- [Genetic Predisposition to Disease](#)
- [Mental Disorders](#)
- [NARP](#)
- [Tuberculosis](#)