

RecomAb™

MCL1 recombinant monoclonal antibody, clone R04-3A4

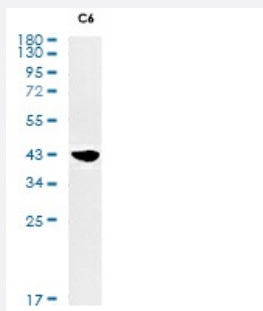
Catalog # RAB01318 Size 100 uL

Applications

Western Blot

Western blot analysis of CD147 in rat Brain, C6, 3T3 lysates using CD147 antibody.

□



Western Blot

Western blot analysis of MCL1 in C6 lysates using MCL1 antibody.

Immunocytochemistry

Immunocytochemistry analysis of CD147 (green) in 3T3 using CD147 antibody, and DAPI (blue).

□

Specification

Product Description

Rabbit recombinant monoclonal antibody raised against human MCL1.

Antibody Species	Rabbit
Immunogen	Original antibody is raised against recombinant protein corresponding to human MCL1.
Theoretical MW (kDa)	Calculated MW: 37 kD
Reactivity	Human
Form	Liquid
Purification	Affinity purification
Isotype	IgG
Recommend Usage	Immunocytochemistry Immunofluorescence Immunoprecipitation Western Blot The optimal working dilution should be determined by the end user.
Storage Buffer	In 50 mM Tris-Glycine, pH 7.4 (0.15 M NaCl, 40% Glycerol, 0.01% Sodium azide and 0.05% BSA)
Storage Instruction	Store at 4°C. For longer storage, aliquot and store at -20°C. Aliquot to avoid repeated freezing and thawing.
Note	This product contains sodium azide: a POISONOUS AND HAZARDOUS SUBSTANCE which should be handled by trained staff only.

Applications

- Western Blot

Western blot analysis of CD147 in rat Brain, C6, 3T3 lysates using CD147 antibody.

- Western Blot

Western blot analysis of MCL1 in C6 lysates using MCL1 antibody.

- Immunocytochemistry

Immunocytochemistry analysis of CD147 (green) in 3T3 using CD147 antibody, and DAPI (blue).

- Immunocytochemistry

- Immunofluorescence

- Immunofluorescence

- Immunoprecipitation
- Immunoprecipitation

Gene Info — MCL1

Entrez GeneID	4170
Protein Accession#	Q07820
Gene Name	MCL1
Gene Alias	BCL2L3, EAT, MCL1L, MCL1S, MGC104264, MGC1839, TM
Gene Description	myeloid cell leukemia sequence 1 (BCL2-related)
Omim ID	159552
Gene Ontology	Hyperlink
Gene Summary	The protein encoded by this gene belongs to the Bcl-2 family. Alternative splicing occurs at this locus and two transcript variants encoding distinct isoforms have been identified. The longer gene product (isoform 1) enhances cell survival by inhibiting apoptosis while the alternatively spliced shorter gene product (isoform 2) promotes apoptosis and is death-inducing. [provided by RefSeq]
Other Designations	OTTHUMP00000032794 OTTHUMP00000032795 induced myeloid leukemia cell differentiation protein Mcl-1 myeloid cell leukemia sequence 1 myeloid cell leukemia sequence 1, isoform 1

Disease

- [Bile Duct Neoplasms](#)
- [Cardiovascular Diseases](#)
- [Cholangiocarcinoma](#)
- [Diabetes Mellitus](#)
- [Edema](#)
- [Genetic Predisposition to Disease](#)
- [Narcolepsy](#)
- [Tuberculosis](#)