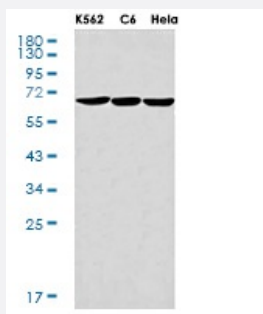


RecomAb™

G3BP1 recombinant monoclonal antibody, clone R09-5B9

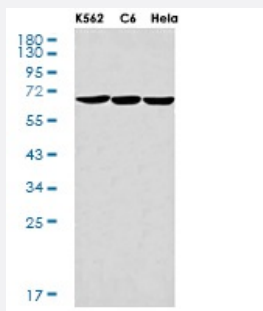
Catalog # RAB01312 Size 100 uL

Applications



Western Blot

Western blot analysis of PLK1 in Jurkat, C6 lysates using PLK1 antibody.



Western Blot

Western blot analysis of G3BP in K562, C6, HeLa lysates using G3BP antibody.

Immunocytochemistry

Immunocytochemistry analysis of PLK1 (green) in HeLa using PLK1 antibody, and DAPI (blue).

Specification

Product Description

Rabbit recombinant monoclonal antibody raised against human G3BP1.

Antibody Species	Rabbit
Immunogen	Original antibody is raised against recombinant protein corresponding to human G3BP1.
Theoretical MW (kDa)	Calculated MW: 52 kD
Reactivity	Human
Form	Liquid
Purification	Affinity purification
Isotype	IgG
Recommend Usage	Immunocytochemistry Immunofluorescence Immunoprecipitation Western Blot The optimal working dilution should be determined by the end user.
Storage Buffer	In 50 mM Tris-Glycine, pH 7.4 (0.15 M NaCl, 40% Glycerol, 0.01% Sodium azide and 0.05% BSA)
Storage Instruction	Store at 4°C. For longer storage, aliquot and store at -20°C. Aliquot to avoid repeated freezing and thawing.
Note	This product contains sodium azide: a POISONOUS AND HAZARDOUS SUBSTANCE which should be handled by trained staff only.

Applications

- Western Blot

Western blot analysis of PLK1 in Jurkat, C6 lysates using PLK1 antibody.

- Western Blot

Western blot analysis of G3BP in K562, C6, Hela lysates using G3BP antibody.

- Immunocytochemistry

Immunocytochemistry analysis of PLK1 (green) in Hela using PLK1 antibody, and DAPI (blue).

- Immunocytochemistry

- Immunofluorescence

- Immunofluorescence

- Immunoprecipitation
- Immunoprecipitation

Gene Info — G3BP1

Entrez GeneID [10146](#)

Protein Accession# [Q13283](#)

Gene Name G3BP1

Gene Alias G3BP, HDH-VIII, MGC111040

Gene Description GTPase activating protein (SH3 domain) binding protein 1

Omim ID [608431](#)

Gene Ontology [Hyperlink](#)

Gene Summary This gene encodes one of the DNA-unwinding enzymes which prefers partially unwound 3'-tailed substrates and can also unwind partial RNA/DNA and RNA/RNA duplexes in an ATP-dependent fashion. This enzyme is a member of the heterogeneous nuclear RNA-binding proteins and is also an element of the Ras signal transduction pathway. It binds specifically to the Ras-GTPase-activating protein by associating with its SH3 domain. Several alternatively spliced transcript variants of this gene have been described, but the full-length nature of some of these variants has not been determined. [provided by RefSeq]

Other Designations GAP binding protein|OTTHUMP00000160618|Ras-GTPase-activating protein SH3-domain-binding protein|RasGAP-associated endoribonuclease G3BP