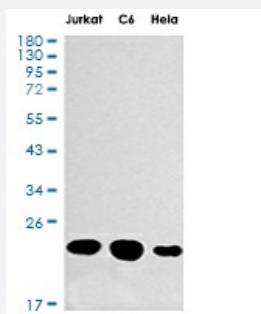


RecomAb™

# SRSF3 recombinant monoclonal antibody, clone R01-6G2

Catalog # RAB01303      Size 100 uL

## Applications



### Western Blot

Western blot analysis of SFRS3 in Jurkat, C6, HeLa lysates using SFRS3 antibody.

## Specification

Product Description	Rabbit recombinant monoclonal antibody raised against human SRSF3.
Antibody Species	Rabbit
Immunogen	Original antibody is raised against recombinant protein corresponding to human SRSF3.
Theoretical MW (kDa)	Calculated MW: 19 kD
Reactivity	Human
Form	Liquid
Purification	Affinity purification
Isotype	IgG
Recommend Usage	Immunohistochemistry (Formalin/PFA-fixed paraffin-embedded sections) Western Blot The optimal working dilution should be determined by the end user.
Storage Buffer	In 50 mM Tris-Glycine, pH 7.4 (0.15 M NaCl, 40% Glycerol, 0.01% Sodium azide and 0.05% BSA)

**Storage Instruction**

Store at 4°C. For longer storage, aliquot and store at -20°C.  
Aliquot to avoid repeated freezing and thawing.

**Note**

This product contains sodium azide: a POISONOUS AND HAZARDOUS SUBSTANCE which should be handled by trained staff only.

## Applications

- Western Blot

Western blot analysis of SFRS3 in Jurkat, C6, HeLa lysates using SFRS3 antibody.

- Immunohistochemistry (Formalin/PFA-fixed paraffin-embedded sections)

- Immunohistochemistry (Formalin/PFA-fixed paraffin-embedded sections)

## Gene Info — SFRS3

**Entrez GeneID**[6428](#)**Protein Accession#**[P84103](#)**Gene Name**

SFRS3

**Gene Alias**

SRp20

**Gene Description**

splicing factor, arginine/serine-rich 3

**Omim ID**[603364](#)**Gene Ontology**[Hyperlink](#)**Gene Summary**

O

**Other Designations**

OTTHUMP00000016294|splicing factor, arginine/serine-rich, 20-kD

## Disease

- [Genetic Predisposition to Disease](#)

- [Glaucoma](#)