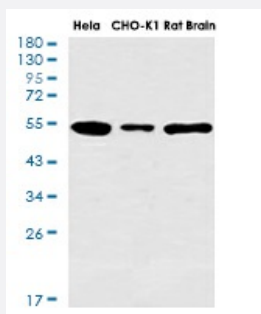


RecomAb™

TUBA4A recombinant monoclonal antibody, clone R02-2H3

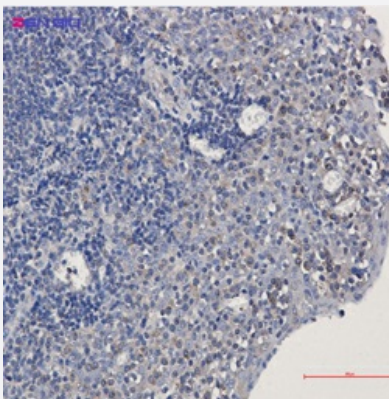
Catalog # RAB01298 Size 100 uL

Applications



Western Blot

Western blot analysis of alpha Tubulin in HeLa, CHO-K1, rat Brain lysates using alpha Tubulin antibody.



Immunohistochemistry (Formalin/PFA-fixed paraffin-embedded sections)

Immunohistochemistry analysis of paraffin-embedded Human tonsil using alpha Tubulin antibody. High-pressure and temperature Sodium Citrate pH 6.0 was used for antigen retrieval.

Specification

Product Description	Rabbit recombinant monoclonal antibody raised against human TUBA4A.
Antibody Species	Rabbit
Immunogen	Original antibody is raised against recombinant protein corresponding to human alpha Tubulin.
Theoretical MW (kDa)	Calculated MW: 50 kD
Reactivity	Human

Form	Liquid
Purification	Affinity purification
Isotype	IgG
Recommend Usage	Immunocytochemistry Immunofluorescence Immunohistochemistry (Frozen sections) Immunohistochemistry (Formalin/PFA-fixed paraffin-embedded sections) Immunoprecipitation Western Blot The optimal working dilution should be determined by the end user.
Storage Buffer	In 50 mM Tris-Glycine, pH 7.4 (0.15 M NaCl, 40% Glycerol, 0.01% Sodium azide and 0.05% BSA)
Storage Instruction	Store at 4°C. For longer storage, aliquot and store at -20°C. Aliquot to avoid repeated freezing and thawing.
Note	This product contains sodium azide: a POISONOUS AND HAZARDOUS SUBSTANCE which should be handled by trained staff only.

Applications

- Western Blot

Western blot analysis of alpha Tubulin in Hela, CHO-K1, rat Brain lysates using alpha Tubulin antibody.

- Immunohistochemistry (Formalin/PFA-fixed paraffin-embedded sections)

Immunohistochemistry analysis of paraffin-embedded Human tonsil using alpha Tubulin antibody. High-pressure and temperature Sodium Citrate pH 6.0 was used for antigen retrieval.

- Immunohistochemistry (Frozen sections)

- Immunocytochemistry

- Immunofluorescence

- Immunoprecipitation

Gene Info — TUBA4A

Entrez GeneID

[7277](#)

Protein Accession#	P68366
Gene Name	TUBA4A
Gene Alias	FLJ30169, H2-ALPHA, TUBA1
Gene Description	tubulin, alpha 4a
Omim ID	191110
Gene Ontology	Hyperlink
Gene Summary	<p>Microtubules of the eukaryotic cytoskeleton perform essential and diverse functions and are composed of a heterodimer of alpha and beta tubulin. The genes encoding these microtubule constituents are part of the tubulin superfamily, which is composed of six distinct families. Genes from the alpha, beta and gamma tubulin families are found in all eukaryotes. The alpha and beta tubulins represent the major components of microtubules, while gamma tubulin plays a critical role in the nucleation of microtubule assembly. There are multiple alpha and beta tubulin genes and they are highly conserved among and between species. This gene encodes an alpha tubulin that is a highly conserved homolog of a rat testis-specific alpha tubulin. [provided by RefSeq]</p>
Other Designations	tubulin alpha-1 chain tubulin, alpha 1 (testis specific)

Pathway

- [Gap junction](#)
- [Pathogenic Escherichia coli infection - EHEC](#)

Disease

- [Diabetes Mellitus](#)