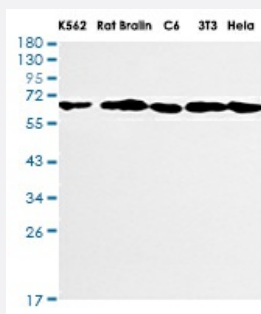


RecomAb™

BECN1 recombinant monoclonal antibody, clone R02-8D5

Catalog # RAB01293 Size 100 uL

Applications



Western Blot

Western blot analysis of Beclin 1 in K562, rat Brain, C6, 3T3, HeLa lysates using Beclin 1 antibody.

Specification

Product Description	Rabbit recombinant monoclonal antibody raised against human BECN1.
Antibody Species	Rabbit
Immunogen	Original antibody is raised against recombinant protein corresponding to human Beclin 1.
Theoretical MW (kDa)	Calculated MW: 52 kD
Reactivity	Human
Form	Liquid
Purification	Affinity purification
Isotype	IgG
Recommend Usage	Immunoprecipitation Western Blot The optimal working dilution should be determined by the end user.
Storage Buffer	In 50 mM Tris-Glycine, pH 7.4 (0.15 M NaCl, 40% Glycerol, 0.01% Sodium azide and 0.05% BSA)

Storage Instruction

Store at 4°C. For longer storage, aliquot and store at -20°C.
Aliquot to avoid repeated freezing and thawing.

Note

This product contains sodium azide: a POISONOUS AND HAZARDOUS SUBSTANCE which should be handled by trained staff only.

Applications

- Western Blot

Western blot analysis of Beclin 1 in K562, rat Brain, C6, 3T3, Hela lysates using Beclin 1 antibody.

- Immunoprecipitation

Gene Info — BECN1

Entrez GeneID [8678](#)

Protein Accession# [Q14457](#)

Gene Name BECN1

Gene Alias ATG6, VPS30, beclin1

Gene Description beclin 1, autophagy related

Omim ID [604378](#)

Gene Ontology [Hyperlink](#)

Gene Summary O

Other Designations ATG6 autophagy related 6 homolog|beclin 1|beclin 1 (coiled-coil, moesin-like BCL2 interacting protein)|beclin 1 (coiled-coil, moesin-like BCL2-interacting protein)

Pathway

- [Regulation of autophagy](#)

Disease

- [Alzheimer disease](#)

- [Huntington Disease](#)