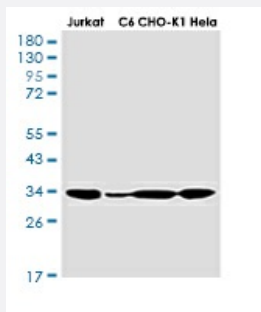


RecomAb™

CDK2 recombinant monoclonal antibody, clone R04-1D5

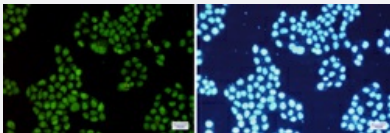
Catalog # RAB01286 Size 100 uL

Applications



Western Blot

Western blot analysis of CDK2 in Jurkat, C6, CHO-K1, HeLa lysates using CDK2 antibody.



Immunocytochemistry

Immunocytochemistry analysis of CDK2(green) in HeLa using CDK2 antibody, and DAPI(blue).

Specification

Product Description	Rabbit recombinant monoclonal antibody raised against human CDK2.
Antibody Species	Rabbit
Immunogen	Original antibody is raised against recombinant protein corresponding to human Cdk2.
Theoretical MW (kDa)	Calculated MW: 34 kD
Reactivity	Human
Form	Liquid

Purification	Affinity purification
Isotype	IgG
Recommend Usage	Immunohistochemistry (Frozen sections) Immunohistochemistry (Formalin/PFA-fixed paraffin-embedded sections) Immunocytochemistry Immunofluorescence Immunoprecipitation Western Blot The optimal working dilution should be determined by the end user.
Storage Buffer	In 50 mM Tris-Glycine pH 7.4 (0.15 M NaCl, 40% Glycerol, 0.01% Sodium azide and 0.05% BSA)
Storage Instruction	Store at 4°C. For longer storage, aliquot and store at -20°C. Aliquot to avoid repeated freezing and thawing.
Note	This product contains sodium azide: a POISONOUS AND HAZARDOUS SUBSTANCE which should be handled by trained staff only.

Applications

- Western Blot

Western blot analysis of CDK2 in Jurkat, C6, CHO-K1, Hela lysates using CDK2 antibody.

- Immunohistochemistry (Formalin/PFA-fixed paraffin-embedded sections)

- Immunohistochemistry (Frozen sections)

- Immunocytochemistry

Immunocytochemistry analysis of CDK2(green) in Hela using CDK2 antibody, and DAPI(blue).

- Immunofluorescence

- Immunoprecipitation

Gene Info — CDK2

Entrez GeneID	1017
Protein Accession#	P24941
Gene Name	CDK2

Gene Alias	p33(CDK2)
Gene Description	cyclin-dependent kinase 2
Omim ID	116953
Gene Ontology	Hyperlink
Gene Summary	<p>The protein encoded by this gene is a member of the Ser/Thr protein kinase family. This protein kinase is highly similar to the gene products of <i>S. cerevisiae</i> cdc28, and <i>S. pombe</i> cdc2. It is a catalytic subunit of the cyclin-dependent protein kinase complex, whose activity is restricted to the G1-S phase, and essential for cell cycle G1/S phase transition. This protein associates with and regulated by the regulatory subunits of the complex including cyclin A or E, CDK inhibitor p21Cip1 (CDKN1A) and p27Kip1 (CDKN1B). Its activity is also regulated by its protein phosphorylation. Two alternatively spliced variants and multiple transcription initiation sites of this gene have been reported. [provided by RefSeq]</p>
Other Designations	cdc2-related protein kinase cell division kinase 2 p33 protein kinase

Pathway

- [Cell cycle](#)
- [p53 signaling pathway](#)
- [Pathways in cancer](#)
- [Prostate cancer](#)
- [Small cell lung cancer](#)

Disease

- [Azoospermia](#)
- [Breast cancer](#)
- [Breast Neoplasms](#)
- [Chromosome Aberrations](#)
- [Diabetes Mellitus](#)
- [Genetic Predisposition to Disease](#)
- [Kidney Failure](#)

- [Lymphoma](#)
- [Neoplasm Invasiveness](#)
- [Ovarian cancer](#)
- [Ovarian Neoplasms](#)