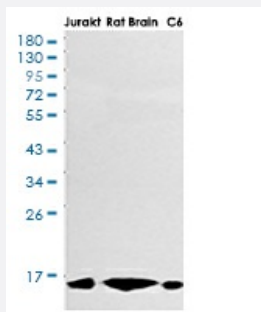


RecomAb™

# CYCS recombinant monoclonal antibody, clone R09-6H3

Catalog # RAB01281      Size 100 uL

## Applications



### Western Blot

Western blot analysis of Cytochrome C in Jurkat, rat Brain, C6 lysates using Cytochrome C antibody.

## Specification

Product Description	Rabbit recombinant monoclonal antibody raised against human CYCS.
Antibody Species	Rabbit
Immunogen	Original antibody is raised against recombinant protein corresponding to human Cytochrome C.
Theoretical MW (kDa)	Calculated MW: 12 kD
Reactivity	Human
Form	Liquid
Purification	Affinity purification
Isotype	IgG
Recommend Usage	Immunohistochemistry (Formalin/PFA-fixed paraffin-embedded sections) Immunoprecipitation Western Blot The optimal working dilution should be determined by the end user.
Storage Buffer	In 50 mM Tris-Glycine pH 7.4 (0.15 M NaCl, 40% Glycerol, 0.01% Sodium azide and 0.05% BSA)

**Storage Instruction**

Store at 4°C. For longer storage, aliquot and store at -20°C.  
Aliquot to avoid repeated freezing and thawing.

**Note**

This product contains sodium azide: a POISONOUS AND HAZARDOUS SUBSTANCE which should be handled by trained staff only.

## Applications

- Western Blot

Western blot analysis of Cytochrome C in Jurkat, rat Brain, C6 lysates using Cytochrome C antibody.

- Immunohistochemistry (Formalin/PFA-fixed paraffin-embedded sections)

- Immunoprecipitation

## Gene Info — CYCS

**Entrez GeneID**[54205](#)**Protein Accession#**[P99999](#)**Gene Name**

CYCS

**Gene Alias**

CYC, HCS

**Gene Description**

cytochrome c, somatic

**Omim ID**[123970](#)**Gene Ontology**[Hyperlink](#)**Gene Summary**

This gene encodes cytochrome c, a component of the electron transport chain in mitochondria. The heme group of cytochrome c accepts electrons from the b-c1 complex and transfers electrons to the cytochrome oxidase complex. Cytochrome c is also involved in initiation of apoptosis. Upon release of cytochrome c to the cytoplasm, the protein binds apoptotic protease activating factor which activates the apoptotic initiator procaspase 9. Many cytochrome c pseudogenes exist, scattered throughout the human genome. [provided by RefSeq]

**Other Designations**

cytochrome c

## Pathway

- [Amyotrophic lateral sclerosis \(ALS\)](#)

- [Apoptosis](#)
- [Colorectal cancer](#)
- [p53 signaling pathway](#)
- [Pathways in cancer](#)
- [Small cell lung cancer](#)

## Disease

- [Thrombocytopenia](#)