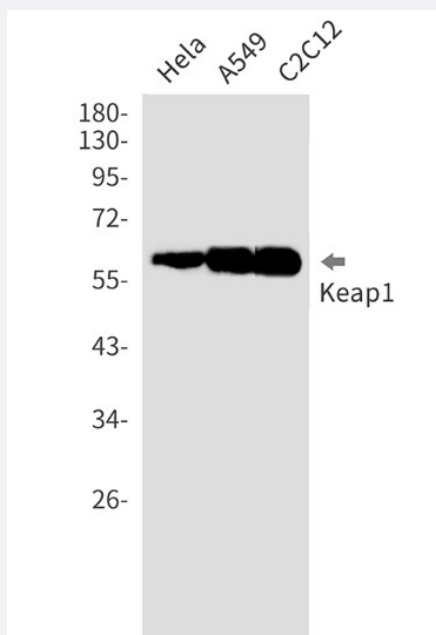


RecomAb™

KEAP1 recombinant monoclonal antibody, clone R02-1H7

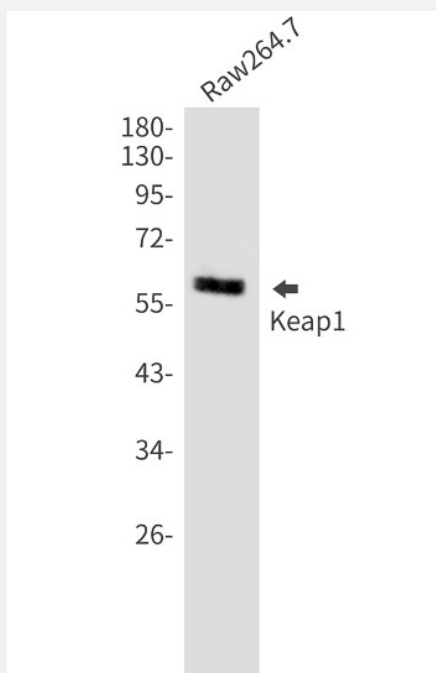
Catalog # RAB01248 Size 100 uL

Applications



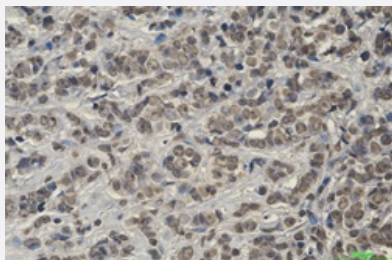
Western Blot

Western Blot analysis of HeLa, A549, C2C12 lysates with KEAP1 recombinant monoclonal antibody, clone R02-1H7 (Cat # RAB01248).



Western Blot

Western Blot analysis of Raw 264.7 cells with KEAP1 recombinant monoclonal antibody, clone R02-1H7 (Cat # RAB01248).



Immunohistochemistry (Formalin/PFA-fixed paraffin-embedded sections)

Immunohistochemistry analysis of paraffin-embedded Human breast cancer using Keap1 antibody. High-pressure and temperature Sodium Citrate pH 6.0 was used for antigen retrieval.

Specification

Product Description	Rabbit recombinant monoclonal antibody raised against human KEAP1.
Antibody Species	Rabbit
Immunogen	Original antibody is raised against recombinant protein corresponding to human Keap1.
Theoretical MW (kDa)	Calculated MW: 70 kD
Reactivity	Human
Form	Liquid
Purification	Affinity purification
Isotype	IgG
Recommend Usage	Immunohistochemistry (Formalin/PFA-fixed paraffin-embedded sections) Western Blot The optimal working dilution should be determined by the end user.
Storage Buffer	In 50 mM Tris-Glycine pH 7.4 (0.15 M NaCl, 40% Glycerol, 0.01% Sodium azide and 0.05% BSA)
Storage Instruction	Store at 4°C. For longer storage, aliquot and store at -20°C. Aliquot to avoid repeated freezing and thawing.
Note	This product contains sodium azide: a POISONOUS AND HAZARDOUS SUBSTANCE which should be handled by trained staff only.

Applications

- Western Blot

Western Blot analysis of Hela, A549, C2C12 lysates with KEAP1 recombinant monoclonal antibody, clone R02-1H7 (Cat # RAB01248).

- Western Blot

Western Blot analysis of Raw 264.7 cells with KEAP1 recombinant monoclonal antibody, clone R02-1H7 (Cat # RAB01248).

- Immunohistochemistry (Formalin/PFA-fixed paraffin-embedded sections)

Immunohistochemistry analysis of paraffin-embedded Human breast cancer using Keap1 antibody. High-pressure and temperature Sodium Citrate pH 6.0 was used for antigen retrieval.

Gene Info — KEAP1

Entrez GeneID [9817](#)

Protein Accession# [Q14145](#)

Gene Name KEAP1

Gene Alias Nrf2, KIAA0132, KLHL19, MGC10630, MGC1114, MGC20887, MGC4407, MGC9454

Gene Description kelch-like ECH-associated protein 1

Omim ID [606016](#)

Gene Ontology [Hyperlink](#)

Gene Summary This gene encodes a protein containing KELCH-1 like domains, as well as a BTB/POZ domain. Kelch-like ECH-associated protein 1 interacts with NF-E2-related factor 2 in a redox-sensitive manner and the dissociation of the proteins in the cytoplasm is followed by transportation of NF-E2-related factor 2 to the nucleus. This interaction results in the expression of the catalytic subunit of gamma-glutamylcysteine synthetase. Two alternatively spliced transcript variants encoding the same isoform have been found for this gene. [provided by RefSeq]

Other Designations cytosolic inhibitor of Nrf2

Pathway

- [Ubiquitin mediated proteolysis](#)

Disease

- [Alzheimer Disease](#)
- [Carcinoma](#)
- [Cataract](#)
- [Disease Progression](#)
- [Esophageal Neoplasms](#)
- [Genetic Predisposition to Disease](#)
- [Lung Neoplasms](#)
- [Parkinson Disease](#)
- [Pulmonary Disease](#)
- [Skin Neoplasms](#)