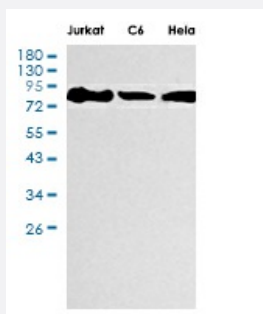


RecomAb™

# MCM5 recombinant monoclonal antibody, clone R05-5E5

Catalog # RAB01244      Size 100 uL

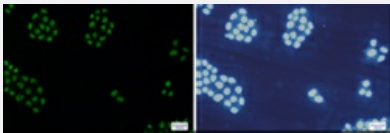
## Applications



### Western Blot

Western blot analysis of MCM5 in Jurkat, C6, HeLa lysates using MCM5 antibody.

### Immunocytochemistry



Immunocytochemistry analysis of MCM5(green) in HeLa using MCM5 antibody, and DAPI(blue).

## Specification

<b>Product Description</b>	Rabbit recombinant monoclonal antibody raised against human MCM5.
<b>Antibody Species</b>	Rabbit
<b>Immunogen</b>	Original antibody is raised against recombinant protein corresponding to human MCM5.
<b>Theoretical MW (kDa)</b>	Calculated MW: 82 kD
<b>Reactivity</b>	Human
<b>Form</b>	Liquid

Purification	Affinity purification
Isotype	IgG
Recommend Usage	Immunohistochemistry (Frozen sections) Immunohistochemistry (Formalin/PFA-fixed paraffin-embedded sections) Immunocytochemistry Immunofluorescence Immunoprecipitation Western Blot The optimal working dilution should be determined by the end user.
Storage Buffer	In 50 mM Tris-Glycine pH 7.4 (0.15 M NaCl, 40% Glycerol, 0.01% Sodium azide and 0.05% BSA)
Storage Instruction	Store at 4°C. For longer storage, aliquot and store at -20°C. Aliquot to avoid repeated freezing and thawing.
Note	This product contains sodium azide: a POISONOUS AND HAZARDOUS SUBSTANCE which should be handled by trained staff only.

## Applications

- Western Blot

Western blot analysis of MCM5 in Jurkat, C6, Hela lysates using MCM5 antibody.

- Immunohistochemistry (Formalin/PFA-fixed paraffin-embedded sections)

- Immunohistochemistry (Frozen sections)

- Immunocytochemistry

Immunocytochemistry analysis of MCM5(green) in Hela using MCM5 antibody, and DAPI(blue).

- Immunofluorescence

- Immunoprecipitation

## Gene Info — MCM5

Entrez GeneID	<a href="#">4174</a>
Protein Accession#	<a href="#">P33992</a>
Gene Name	MCM5

Gene Alias	CDC46, MGC5315, P1-CDC46
Gene Description	minichromosome maintenance complex component 5
Omim ID	<a href="#">602696</a>
Gene Ontology	<a href="#">Hyperlink</a>
Gene Summary	The protein encoded by this gene is structurally very similar to the CDC46 protein from <i>S. cerevisiae</i> , a protein involved in the initiation of DNA replication. The encoded protein is a member of the MCM family of chromatin-binding proteins and can interact with at least two other members of this family. The encoded protein is upregulated in the transition from the G0 to G1/S phase of the cell cycle and may actively participate in cell cycle regulation. [provided by RefSeq]
Other Designations	DNA replication licensing factor MCM5 minichromosome maintenance deficient 5, cell division cycle 46 minichromosome maintenance deficient 5 (cell division cycle 46)

## Pathway

- [Cell cycle](#)
- [DNA replication](#)

## Disease

- [Genetic Predisposition to Disease](#)
- [Kidney Failure](#)