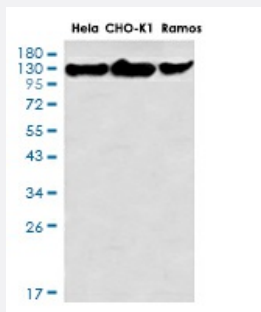


RecomAb™

RAD21 recombinant monoclonal antibody, clone R03-5I0

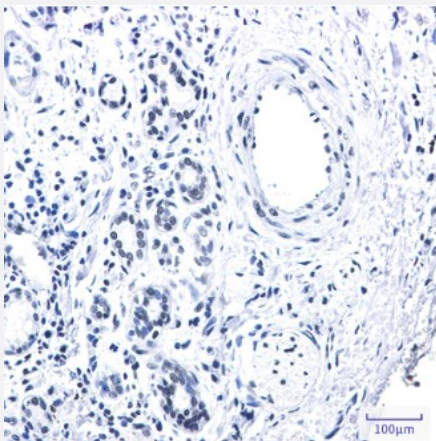
Catalog # RAB01219 Size 100 uL

Applications



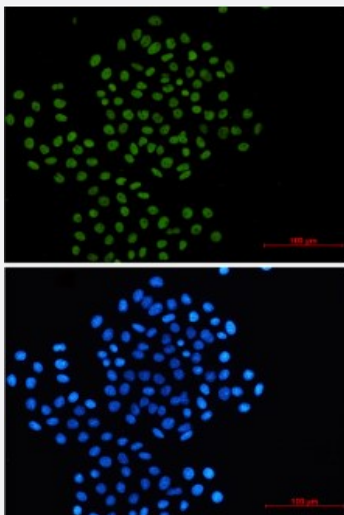
Western Blot

Western blot analysis of Rad21 in HeLa, CHO-K1, Ramos lysates using Rad21 antibody.



Immunohistochemistry (Formalin/PFA-fixed paraffin-embedded sections)

Immunohistochemical staining (Formalin-fixed paraffin-embedded sections) of human lung cancer with RAD21 recombinant monoclonal antibody, clone R03-5I0 (Cat # RAB01219).



Immunocytochemistry

Immunocytochemistry staining of HeLa cells with RAD21 recombinant monoclonal antibody, clone R03-5I0 (Cat # RAB01219).

Specification

Product Description	Rabbit recombinant monoclonal antibody raised against human RAD21.
Antibody Species	Rabbit
Immunogen	Original antibody is raised against synthetic peptide corresponding to human Rad21.
Theoretical MW (kDa)	Calculated MW: 72 kD
Reactivity	Human
Form	Liquid
Purification	Affinity purification
Isotype	IgG
Recommend Usage	Western Blot Immunohistochemistry (Frozen sections) Immunohistochemistry (Formalin/PFA-fixed paraffin-embedded sections) Immunocytochemistry Immunofluorescence The optimal working dilution should be determined by the end user.
Storage Buffer	In 50mM Tris-Glycine pH 7.4 (0.15M NaCl, 40% Glycerol, 0.01% Sodium azide and 0.05% BSA)
Storage Instruction	Store at 4°C. For longer storage, aliquot and store at -20°C. Aliquot to avoid repeated freezing and thawing.
Note	This product contains sodium azide: a POISONOUS AND HAZARDOUS SUBSTANCE which should be handled by trained staff only.

Applications

- Western Blot

Western blot analysis of Rad21 in Hela, CHO-K1, Ramos lysates using Rad21 antibody.

- Immunohistochemistry (Formalin/PFA-fixed paraffin-embedded sections)

Immunohistochemical staining (Formalin-fixed paraffin-embedded sections) of human lung cancer with RAD21 recombinant monoclonal antibody, clone R03-5I0 (Cat # RAB01219).

- Immunohistochemistry (Frozen sections)

- Immunocytochemistry

Immunocytochemistry staining of HeLa cells with RAD21 recombinant monoclonal antibody, clone R03-5I0 (Cat # RAB01219).

- Immunofluorescence

Gene Info — RAD21

Entrez GeneID [5885](#)

Protein Accession# [O60216](#)

Gene Name RAD21

Gene Alias FLJ25655, FLJ40596, HR21, HRAD21, KIAA0078, MCD1, NXP1, SCC1, hHR21

Gene Description RAD21 homolog (S. pombe)

Omim ID [606462](#)

Gene Ontology [Hyperlink](#)

Gene Summary The protein encoded by this gene is highly similar to the gene product of Schizosaccharomyces pombe rad21, a gene involved in the repair of DNA double-strand breaks, as well as in chromatid cohesion during mitosis. This protein is a nuclear phospho-protein, which becomes hyperphosphorylated in cell cycle M phase. The highly regulated association of this protein with mitotic chromatin specifically at the centromere region suggests its role in sister chromatid cohesion in mitotic cells. [provided by RefSeq]

Other Designations RAD21 homolog|nuclear matrix protein 1|protein involved in DNA double-strand break repair

Pathway

- [Cell cycle](#)

Disease

- [Adenocarcinoma](#)
- [Fibrosis](#)
- [Genetic Predisposition to Disease](#)

- [Neoplasms](#)
- [Pancreatic Neoplasms](#)
- [Radiation Injuries](#)