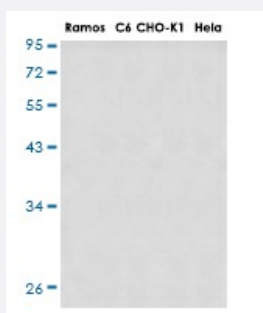


RecomAb™

RPS20 recombinant monoclonal antibody, clone R08-2A0

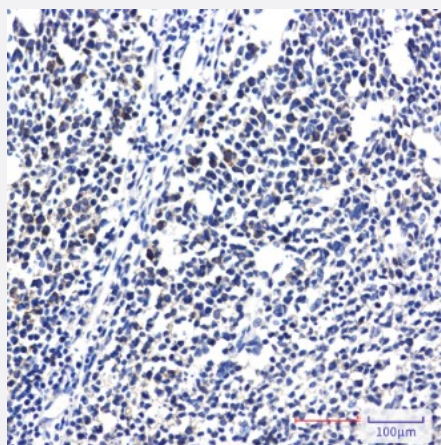
Catalog # RAB01217 Size 100 uL

Applications



Western Blot

Western blot analysis of RPS20 in HeLa, CHO-K1, C6, Ramos lysates using RPS20 antibody.



Immunohistochemistry (Formalin/PFA-fixed paraffin-embedded sections)

Immunohistochemical staining (Formalin-fixed paraffin-embedded sections) of human tonsil with RPS20 recombinant monoclonal antibody, clone R08-2A0 (Cat # RAB01217).

Specification

Product Description	Rabbit recombinant monoclonal antibody raised against human RPS20.
Antibody Species	Rabbit
Immunogen	Original antibody is raised against synthetic peptide corresponding to human RPS20.
Theoretical MW (kDa)	Calculated MW: 13 kD
Reactivity	Human

Form	Liquid
Purification	Affinity purification
Isotype	IgG
Recommend Usage	Western Blot Immunohistochemistry (Formalin/PFA-fixed paraffin-embedded sections) The optimal working dilution should be determined by the end user.
Storage Buffer	In 50mM Tris-Glycine pH 7.4 (0.15M NaCl, 40% Glycerol, 0.01% Sodium azide and 0.05% BSA)
Storage Instruction	Store at 4°C. For longer storage, aliquot and store at -20°C. Aliquot to avoid repeated freezing and thawing.
Note	This product contains sodium azide: a POISONOUS AND HAZARDOUS SUBSTANCE which should be handled by trained staff only.

Applications

- Western Blot

Western blot analysis of RPS20 in HeLa, CHO-K1, C6, Ramos lysates using RPS20 antibody.

- Immunohistochemistry (Formalin/PFA-fixed paraffin-embedded sections)

Immunohistochemical staining (Formalin-fixed paraffin-embedded sections) of human tonsil with RPS20 recombinant monoclonal antibody, clone R08-2A0 (Cat # RAB01217).

Gene Info — RPS20

Entrez GeneID	6224
Protein Accession#	P60866
Gene Name	RPS20
Gene Alias	FLJ27451, MGC102930
Gene Description	ribosomal protein S20
Omim ID	603682
Gene Ontology	Hyperlink

Gene Summary

Ribosomes, the organelles that catalyze protein synthesis, consist of a small 40S subunit and a large 60S subunit. Together these subunits are composed of 4 RNA species and approximately 80 structurally distinct proteins. This gene encodes a ribosomal protein that is a component of the 40S subunit. The protein belongs to the S10P family of ribosomal proteins. It is located in the cytoplasm. This gene is co-transcribed with the small nucleolar RNA gene U54, which is located in its second intron. As is typical for genes encoding ribosomal proteins, there are multiple processed pseudogenes of this gene dispersed through the genome. Two transcript variants encoding different isoforms have been identified for this gene. [provided by RefSeq]

Other Designations

40S ribosomal protein S20

Pathway

- [Ribosome](#)

Disease

- [Diabetes Mellitus](#)