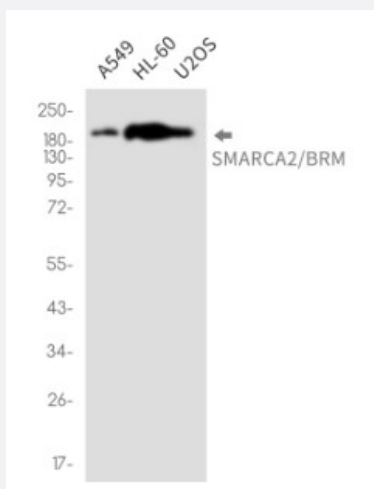


RecomAb™

# SMARCA2 recombinant monoclonal antibody, clone R02-3E2

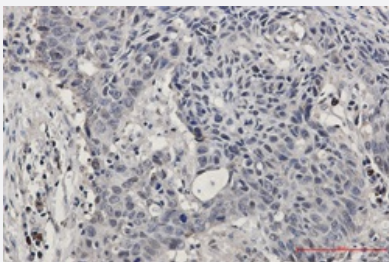
Catalog # RAB01212      Size 100 uL

## Applications



### Western Blot

Western Blot analysis of A549, HL-60, U2OS lysates with SMARCA2 recombinant monoclonal antibody, clone R02-3E2 (Cat # RAB01212).



### Immunohistochemistry (Formalin/PFA-fixed paraffin-embedded sections)

Immunohistochemistry analysis of paraffin-embedded Human lung cancer tissue using SMARCA2/BRM antibody. High-pressure and temperature Sodium Citrate pH 6.0 was used for antigen retrieval.



### Immunocytochemistry

Immunocytochemistry analysis of SMARCA2 (green) in 293 using SMARCA2 antibody, and DAPI (blue).

## Specification

<b>Product Description</b>	Rabbit recombinant monoclonal antibody raised against human SMARCA2.
<b>Antibody Species</b>	Rabbit
<b>Immunogen</b>	Original antibody is raised against synthetic peptide corresponding to human SMARCA2/BRM.
<b>Theoretical MW (kDa)</b>	Calculated MW: 181 k
<b>Reactivity</b>	Human
<b>Form</b>	Liquid
<b>Purification</b>	Affinity purification
<b>Isotype</b>	IgG
<b>Recommend Usage</b>	Western Blot Immunohistochemistry (Frozen sections) Immunohistochemistry (Formalin/PFA-fixed paraffin-embedded sections) Immunocytochemistry Immunofluorescence The optimal working dilution should be determined by the end user.
<b>Storage Buffer</b>	In 50mM Tris-Glycine pH 7.4 (0.15M NaCl, 40% Glycerol, 0.01% Sodium azide and 0.05% BSA)
<b>Storage Instruction</b>	Store at 4°C. For longer storage, aliquot and store at -20°C. Aliquot to avoid repeated freezing and thawing.
<b>Note</b>	This product contains sodium azide: a POISONOUS AND HAZARDOUS SUBSTANCE which should be handled by trained staff only.

## Applications

- Western Blot

Western Blot analysis of A549, HL-60, U2OS lysates with SMARCA2 recombinant monoclonal antibody, clone R02-3E2 (Cat # RAB01212).

- Immunohistochemistry (Formalin/PFA-fixed paraffin-embedded sections)

Immunohistochemistry analysis of paraffin-embedded Human lung cancer tissue using SMARCA2/BRM antibody. High-pressure and temperature Sodium Citrate pH 6.0 was used for antigen retrieval.

- Immunohistochemistry (Frozen sections)

- Immunocytochemistry

Immunocytochemistry analysis of SMARCA2 (green) in 293 using SMARCA2 antibody, and DAPI (blue).

- Immunofluorescence

## Gene Info — SMARCA2

Entrez GeneID	<a href="#">6595</a>
Protein Accession#	<a href="#">P51531</a>
Gene Name	SMARCA2
Gene Alias	BAF190, BRM, FLJ36757, MGC74511, SNF2, SNF2L2, SNF2LA, SWI2, Sth1p, hBRM, hSNF2a
Gene Description	SWI/SNF related, matrix associated, actin dependent regulator of chromatin, subfamily a, member 2
Omim ID	<a href="#">600014</a>
Gene Ontology	<a href="#">Hyperlink</a>
Gene Summary	The protein encoded by this gene is a member of the SWI/SNF family of proteins and is highly similar to the brahma protein of Drosophila. Members of this family have helicase and ATPase activities and are thought to regulate transcription of certain genes by altering the chromatin structure around those genes. The encoded protein is part of the large ATP-dependent chromatin remodeling complex SNF/SWI, which is required for transcriptional activation of genes normally repressed by chromatin. Two transcript variants encoding different isoforms have been found for this gene, which contains a trinucleotide repeat (CAG) length polymorphism. [provided by RefSeq]
Other Designations	OTTHUMP00000020970 OTTHUMP00000020971 SNF2-alpha SNF2-like 2 SNF2/SWI2-like protein 2 SWI/SNF-related matrix-associated actin-dependent regulator of chromatin a2 global transcription activator homologous sequence sucrose nonfermenting 2-like protein 2

## Disease

- [Breast cancer](#)
- [Breast Neoplasms](#)
- [Schizophrenia](#)
- [Tobacco Use Disorder](#)