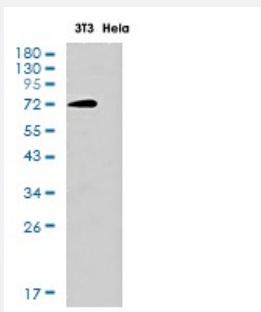


RecomAb™

SOX9 recombinant monoclonal antibody, clone R06-7F6

Catalog # RAB01211 Size 100 uL

Applications



Western Blot

Western blot analysis of SOX9 in 3T3, HeLa lysates using SOX9 antibody.

Specification

Product Description	Rabbit recombinant monoclonal antibody raised against human SOX9.
Antibody Species	Rabbit
Immunogen	Original antibody is raised against recombinant protein corresponding to human SOX9.
Theoretical MW (kDa)	Calculated MW: 56 kD
Reactivity	Human
Form	Liquid
Purification	Affinity purification
Isotype	IgG
Recommend Usage	Western Blot Immunohistochemistry (Formalin/PFA-fixed paraffin-embedded sections) Immunoprecipitation The optimal working dilution should be determined by the end user.
Storage Buffer	In 50mM Tris-Glycine pH 7.4 (0.15M NaCl, 40% Glycerol, 0.01% Sodium azide and 0.05% BSA)

Storage Instruction

Store at 4°C. For longer storage, aliquot and store at -20°C.
Aliquot to avoid repeated freezing and thawing.

Note

This product contains sodium azide: a POISONOUS AND HAZARDOUS SUBSTANCE which should be handled by trained staff only.

Applications

- Western Blot

Western blot analysis of SOX9 in 3T3, Hela lysates using SOX9 antibody.

- Immunohistochemistry (Formalin/PFA-fixed paraffin-embedded sections)

- Immunoprecipitation

Gene Info — SOX9

Entrez GeneID[6662](#)**Protein Accession#**[P48436](#)**Gene Name**

SOX9

Gene Alias

CMD1, CMPD1, SRA1

Gene Description

SRY (sex determining region Y)-box 9

Omim ID[114290 608160](#)**Gene Ontology**[Hyperlink](#)**Gene Summary**

The protein encoded by this gene recognizes the sequence CCTTGAG along with other members of the HMG-box class DNA-binding proteins. It acts during chondrocyte differentiation and, with steroidogenic factor 1, regulates transcription of the anti-Muellerian hormone (AMH) gene. Deficiencies lead to the skeletal malformation syndrome campomelic dysplasia, frequently with sex reversal. [provided by RefSeq]

Other Designations

SRY (sex determining region Y)-box 9 (campomelic dysplasia, autosomal sex-reversal)|SRY (sex-determining region Y)-box 9 (campomelic dysplasia, autosomal sex-reversal)|SRY (sex-determining region Y)-box 9 protein|campomelic dysplasia, autosomal sex-reversal

Disease

- [Cleft Lip](#)
- [Cleft Palate](#)
- [Genetic Predisposition to Disease](#)
- [Hypospadias](#)
- [Ovarian Neoplasms](#)
- [Sex determination](#)