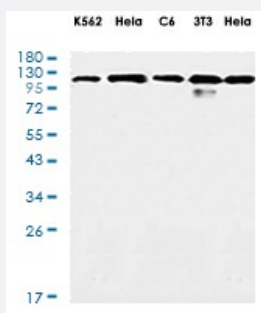


RecomAb™

# VCL recombinant monoclonal antibody, clone R04-8F9

Catalog # RAB01196      Size 100 uL

## Applications



### Western Blot

Western blot analysis of Vinculin in K562, rat Brain, C6, 3T3, HeLa lysates using Vinculin antibody.

## Specification

Product Description	Rabbit recombinant monoclonal antibody raised against human VCL.
Antibody Species	Rabbit
Immunogen	Original antibody is raised against a synthetic peptide corresponding to human Vinculin.
Theoretical MW (kDa)	Calculated MW: 124 k
Reactivity	Human
Form	Liquid
Purification	Affinity purification
Isotype	IgG
Recommend Usage	Western Blot Immunocytochemistry Immunofluorescence Immunoprecipitation The optimal working dilution should be determined by the end user.

Storage Buffer	In 50mM Tris-Glycine pH 7.4 (0.15M NaCl, 40% Glycerol, 0.01% Sodium azide and 0.05% BSA)
Storage Instruction	Store at 4°C. For longer storage, aliquot and store at -20°C. Aliquot to avoid repeated freezing and thawing.
Note	This product contains sodium azide: a POISONOUS AND HAZARDOUS SUBSTANCE which should be handled by trained staff only.

## Applications

- Western Blot

Western blot analysis of Vinculin in K562, rat Brain, C6, 3T3, Hela lysates using Vinculin antibody.

- Immunocytochemistry

- Immunofluorescence

- Immunoprecipitation

## Gene Info — VCL

Entrez GeneID	<a href="#">7414</a>
Protein Accession#	<a href="#">P18206</a>
Gene Name	VCL
Gene Alias	CMD1W, MVCL
Gene Description	vinculin
Omim ID	<a href="#">193065 611407</a>
Gene Ontology	<a href="#">Hyperlink</a>

Gene Summary	Vinculin is a cytoskeletal protein associated with cell-cell and cell-matrix junctions, where it is thought to function as one of several interacting proteins involved in anchoring F-actin to the membrane. Defects in VCL are the cause of cardiomyopathy dilated type 1W. Dilated cardiomyopathy is a disorder characterized by ventricular dilation and impaired systolic function, resulting in congestive heart failure and arrhythmia. Multiple alternatively spliced transcript variants have been found for this gene, but the biological validity of some variants has not been determined. [provided by RefSeq]
--------------	---

Other Designations	OTTHUMP00000019861 OTTHUMP00000043885 metavinculin
--------------------	--

## Pathway

- [Adherens junction](#)
- [Focal adhesion](#)
- [Leukocyte transendothelial migration](#)
- [Regulation of actin cytoskeleton](#)

## Disease

- [Alzheimer Disease](#)
- [Cardiomyopathy](#)
- [Cardiovascular Diseases](#)
- [Cleft Lip](#)
- [Cleft Palate](#)
- [Diabetes Mellitus](#)
- [Edema](#)
- [Genetic Predisposition to Disease](#)