

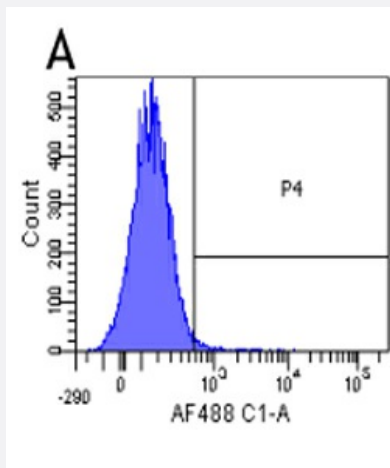
RecomAb™

HuAb

ITGA4 humanized monoclonal antibody, clone Natalizumab

Catalog # RAB01174 Size 200 ug

Applications



Flow Cytometry

Flow-cytometry were stained with an isotype control at a concentration of 1 ug/mL for 30 mins at RT. After washing, bound antibody was detected using a AF488 conjugated donkey anti-rabbit antibody and cells analysed on a FACSCanto flow-cytometer.

Specification

Product Description	Humanized recombinant monoclonal antibody raised against human Integrin alpha 4.
Antibody Species	Human
Immunogen	Original antibody is raised against the RAMOS cell line, a non-EBV releasing cell line, injected into mice.
Reactivity	Human
Specificity	This antibody binds to the alpha 4 binds subunit of $\alpha 4 \beta 1$ (also known as very late antigen 4 [VLA-4] or CD49d-CD29) and $\alpha 4 \beta 7$ integrin.
Form	Liquid
Purification	Protein A affinity purification
Isotype	IgG4, Kappa

Recommend Usage	Flow cytometry The optimal working dilution should be determined by the end user.
Storage Buffer	In PBS with 0.02% Proclin 300
Storage Instruction	Store at 4°C for up to 3 months. For longer storage, aliquot and store at -20°C.

Applications

- Flow Cytometry

Flow-cytometry were stained with an isotype control at a concentration of 1 ug/mL for 30 mins at RT. After washing, bound antibody was detected using a AF488 conjugated donkey anti-rabbit antibody and cells analysed on a FACSCanto flow-cytometer.

Gene Info — ITGA4

Entrez GeneID	3676
Protein Accession#	P13612
Gene Name	ITGA4
Gene Alias	CD49D, IA4, MGC90518
Gene Description	integrin, alpha 4 (antigen CD49D, alpha 4 subunit of VLA-4 receptor)
Omim ID	192975
Gene Ontology	Hyperlink
Gene Summary	The product of this gene belongs to the integrin alpha chain family of proteins. Integrins are hetero dimeric integral membrane proteins composed of an alpha chain and a beta chain. This gene encodes an alpha 4 chain. Unlike other integrin alpha chains, alpha 4 neither contains an I-domain, nor undergoes disulfide-linked cleavage. Alpha 4 chain associates with either beta 1 chain or beta 7 chain. [provided by RefSeq]
Other Designations	269C wild type antigen CD49D, alpha-4 subunit of VLA-4 receptor integrin alpha 4 integrin alpha-4 subunit very late activation protein 4 receptor, alpha 4 subunit

Pathway

- [Arrhythmogenic right ventricular cardiomyopathy \(ARVC\)](#)
- [Cell adhesion molecules \(CAMs\)](#)

- [ECM-receptor interaction](#)
- [Focal adhesion](#)
- [Hematopoietic cell lineage](#)
- [Hypertrophic cardiomyopathy \(HCM\)](#)
- [Leukocyte transendothelial migration](#)
- [Regulation of actin cytoskeleton](#)

Disease

- [Autistic Disorder](#)
- [Cardiovascular Diseases](#)
- [Diabetes Mellitus](#)
- [Edema](#)
- [Genetic Predisposition to Disease](#)
- [Graft vs Host Disease](#)
- [Multiple Sclerosis](#)
- [Neurogenic Inflammation](#)
- [Tobacco Use Disorder](#)